



Mayor's Annual Address to the South Bend Common Council

February 10, 2014



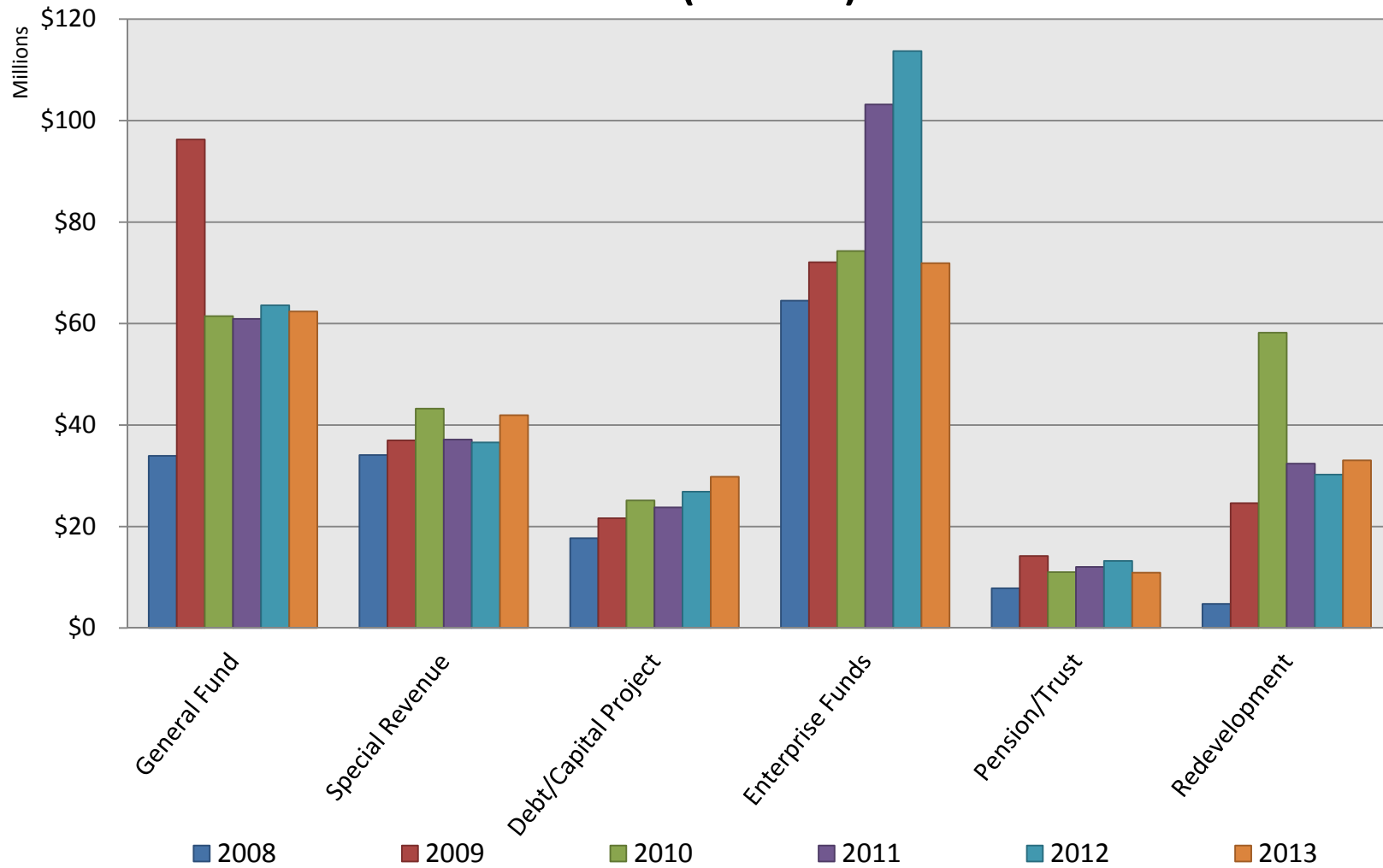
City of South Bend, Indiana
Consolidated Revenue and Expenditure Summary*
2008 – 2013

Fund Type	2008 Actual	2009 Actual	2010 Actual	2011 Actual	2012 Actual	2013 Actual
<u>Revenue</u>						
General Fund	\$33,930,404	\$96,281,658	\$61,449,946	\$60,911,669	\$63,585,275	\$62,367,950
Special Revenue	34,090,381	36,966,298	43,224,541	37,143,146	36,566,935	41,937,905
Debt/Capital Project	17,697,176	21,634,433	25,131,106	23,765,160	26,875,088	29,795,298
Enterprise Funds	64,521,513	72,074,502	74,292,685	103,169,961	113,687,196	71,883,608
Pension/Trust	7,821,320	14,193,476	11,011,500	12,021,517	13,207,579	10,913,213
Redevelopment	4,752,342	24,600,369	58,207,851	32,382,186	30,244,194	33,035,706
Subtotal	162,813,136	265,750,736	273,317,629	269,393,639	284,166,267	249,933,679
Use of Fund Balance	55,158,413	0	0	0	0	5,295,680
Total	217,971,549	265,750,736	273,317,629	269,393,639	284,166,267	255,229,358
<u>Expenditures</u>						
General Fund	66,503,546	61,327,868	59,241,185	61,438,862	63,399,284	62,326,328
Special Revenue	30,684,881	27,863,007	45,665,687	38,926,920	35,782,342	38,190,615
Debt/Capital Project	17,896,634	17,723,766	19,923,960	21,972,775	26,063,378	30,254,298
Enterprise Funds	74,460,068	75,348,774	74,145,059	86,579,570	89,188,333	86,866,246
Pension/Trust	11,593,997	11,647,851	11,799,890	12,323,516	12,215,209	11,927,127
Redevelopment	16,832,423	21,593,080	26,990,015	45,753,683	34,578,806	25,664,744
Subtotal	217,971,549	215,504,346	237,765,796	266,995,326	261,227,352	255,229,358
Source of Fund Balance	0	50,246,390	35,551,833	2,398,313	22,938,915	0
Total	217,971,549	265,750,736	273,317,629	269,393,639	284,166,267	255,229,358

*Excludes Internal Service Funds

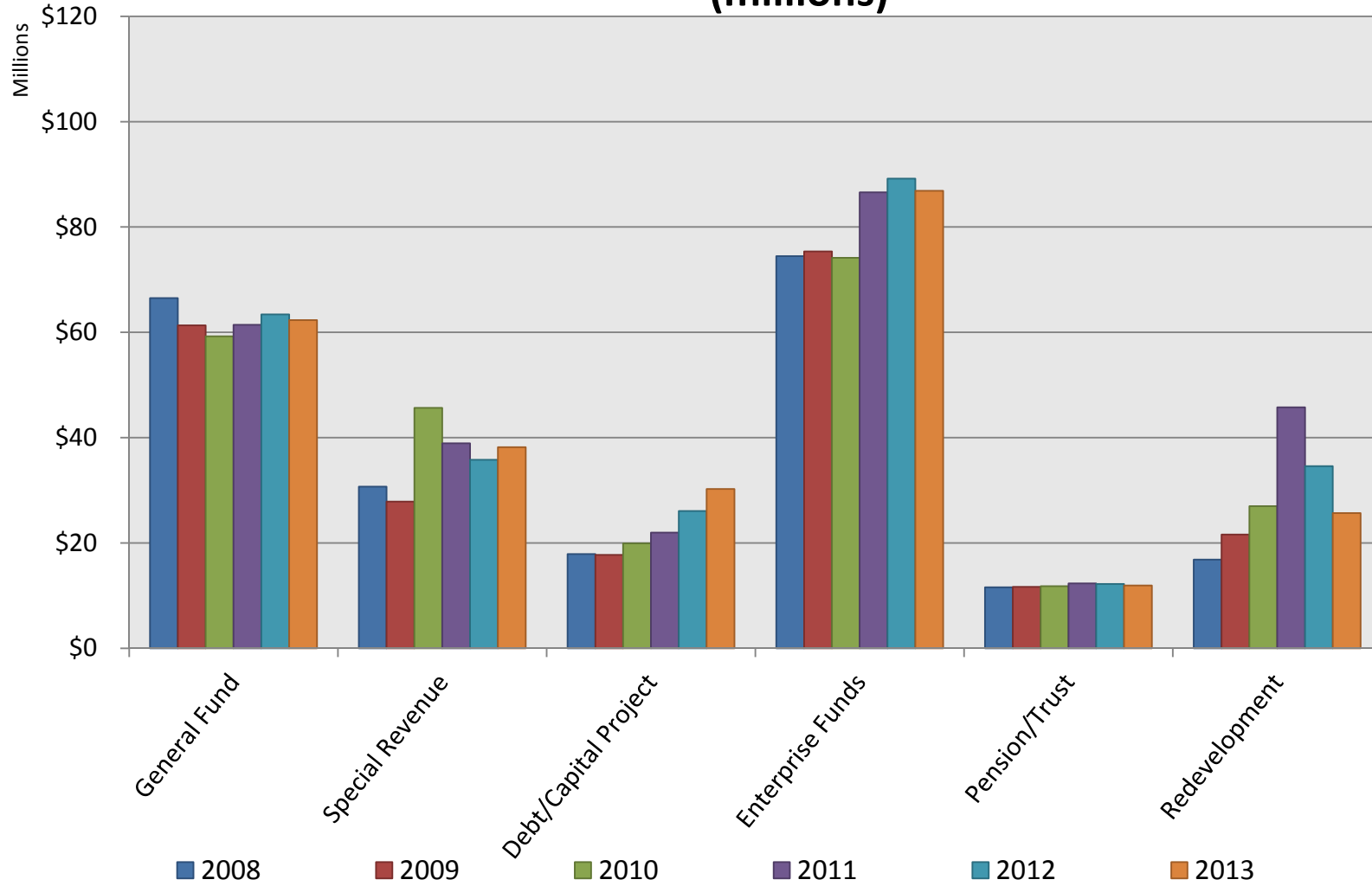


South Bend - Revenue by Fund Type (millions)



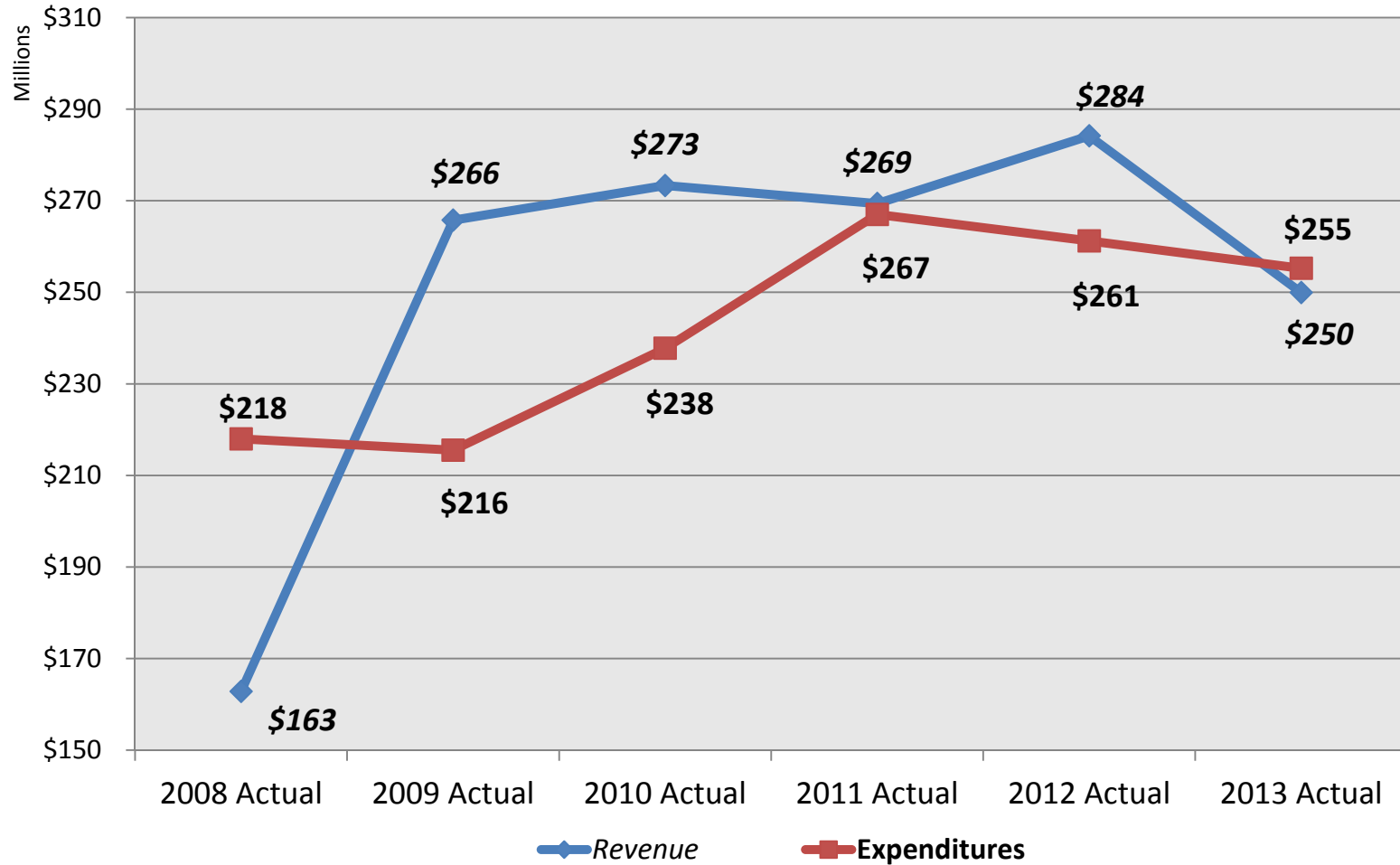


South Bend - Expenditures by Fund Type (millions)



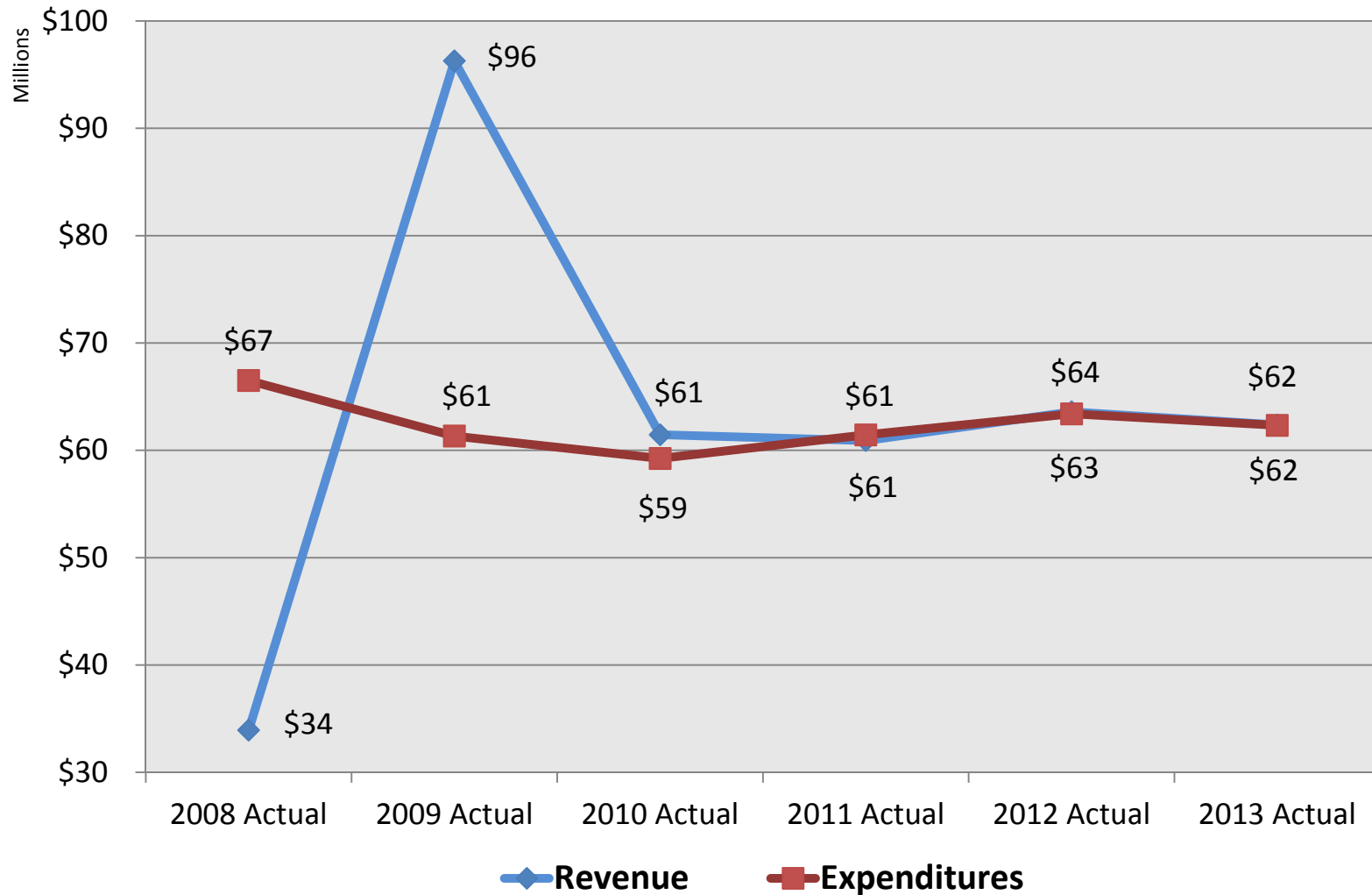


Revenue & Expenditures - All Funds (millions)



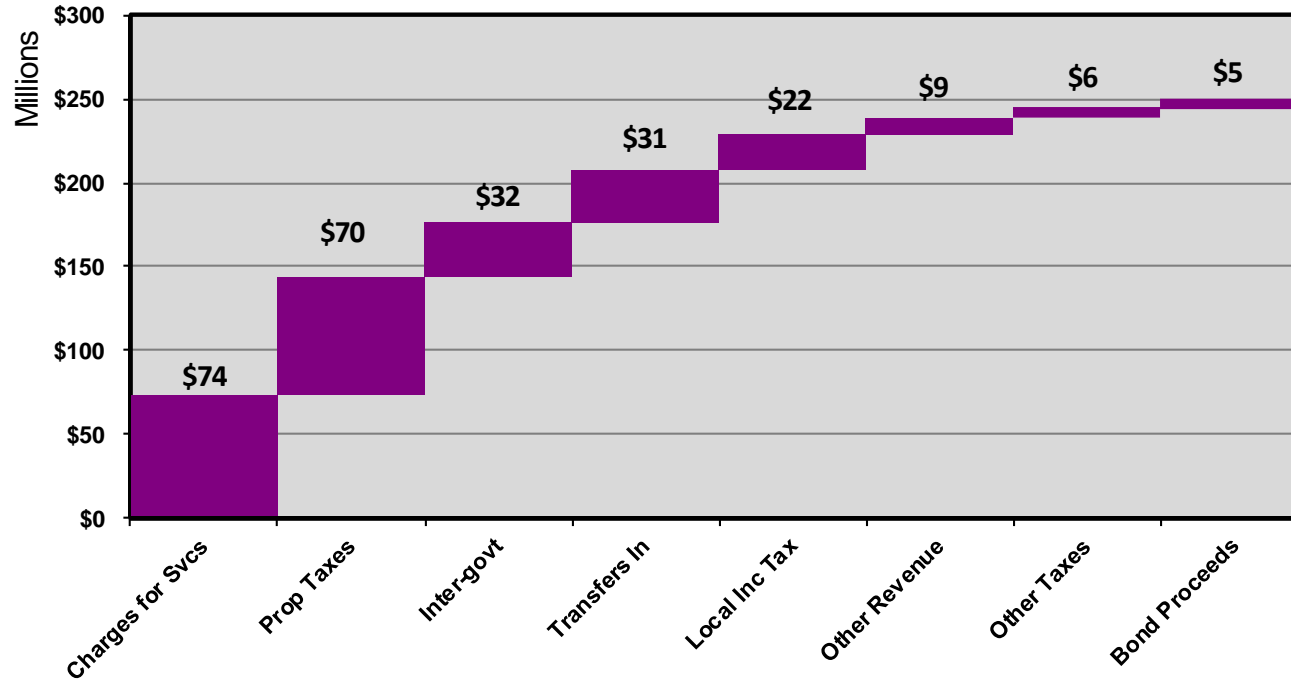


Revenue & Expenditures - General Fund (millions)





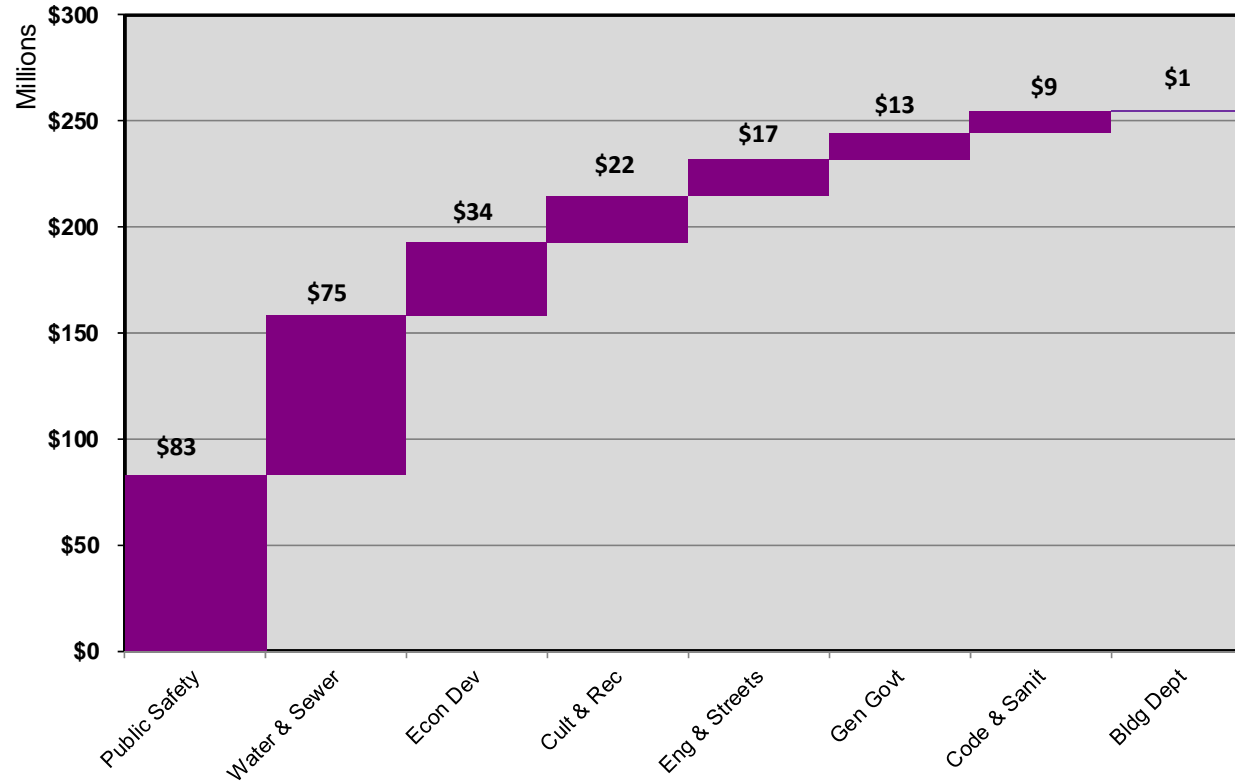
2013 Revenue



Revenue Type	2013 Revenue	Percent
Charges for Services	73,822,648	29.54%
Property Taxes	69,980,288	28.00%
Inter-Governmental	32,262,794	12.91%
Transfers In	31,218,635	12.49%
Local Income Taxes	21,916,677	8.77%
Other Revenue	9,358,327	3.74%
Other Taxes	5,953,032	2.38%
Bond Proceeds	5,421,277	2.17%
Total	249,933,679	100.00%



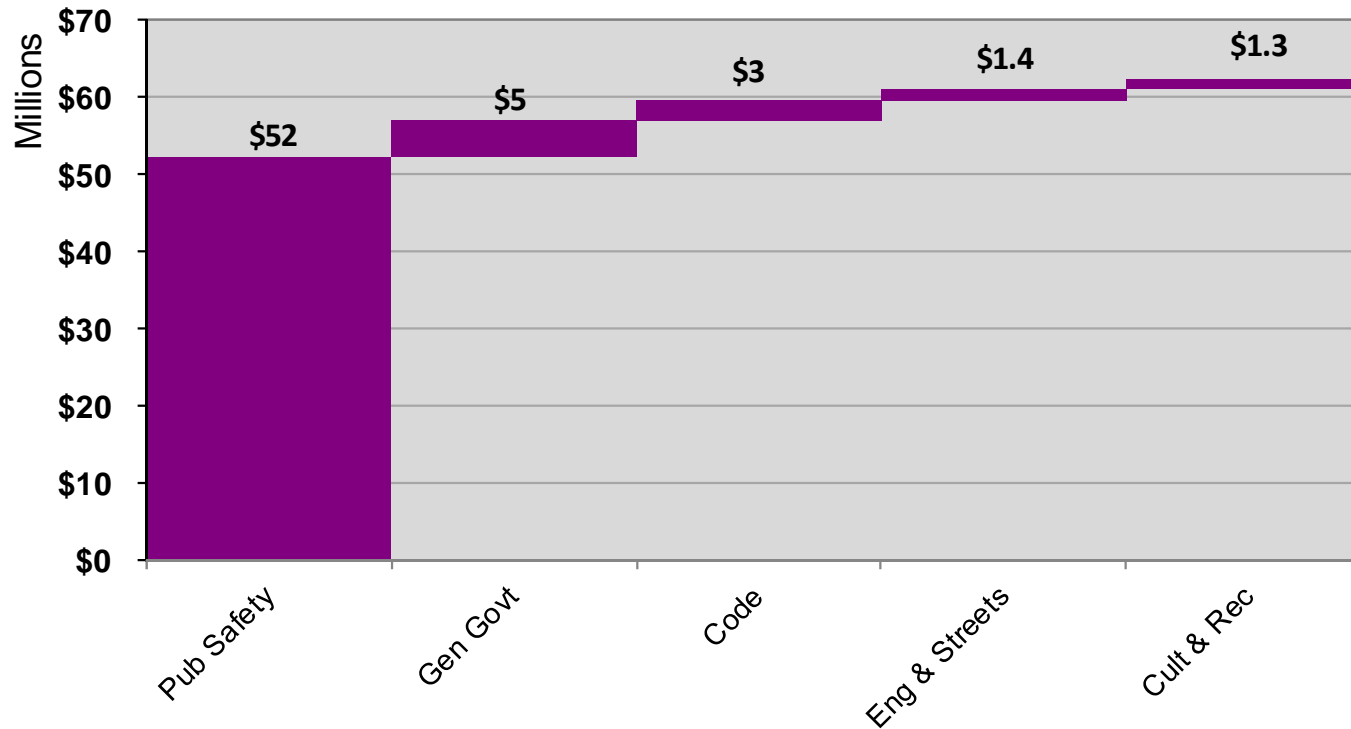
2013 Expenditures



Activity	2013 Actual	Percent
Public Safety	83,194,698	32.60%
Water & Sewer	75,096,691	29.42%
Economic Development	34,390,819	13.47%
Culture & Recreation	22,184,616	8.69%
Engineering & Streets	17,120,436	6.71%
General Government	12,781,296	5.01%
Code & Sanitation	9,454,466	3.70%
Building Department	1,006,337	0.39%
Total	255,229,358	100.00%



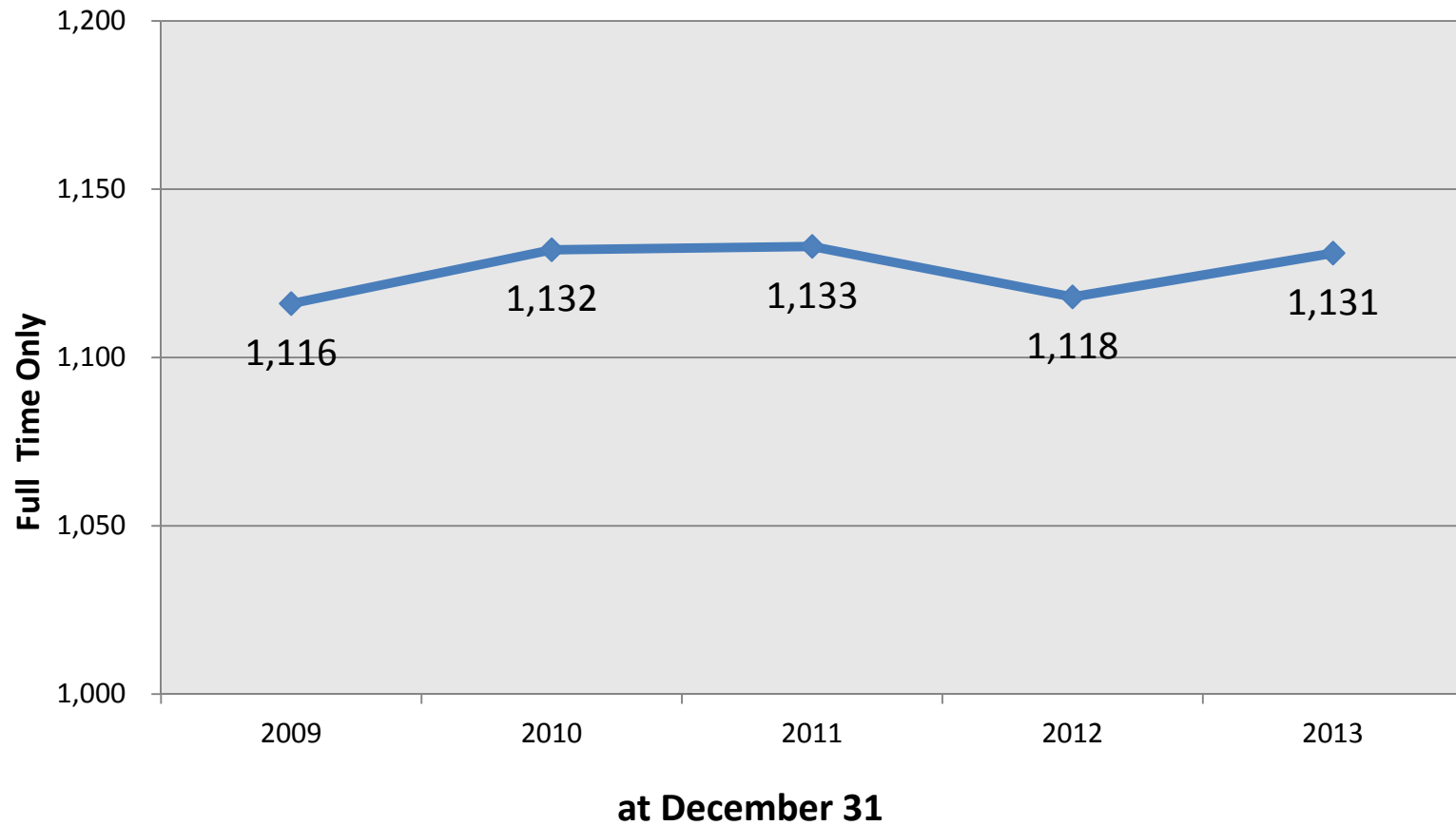
2013 General Fund Expenditures



Activity	2013 Expenditures	Percent
Public Safety	52,315,109	83.94%
General Government	4,640,752	7.45%
Code Enforcement	2,638,745	4.23%
Engineering & Streets	1,409,625	2.26%
Culture & Recreation	1,322,096	2.12%
Total	62,326,328	100.00%

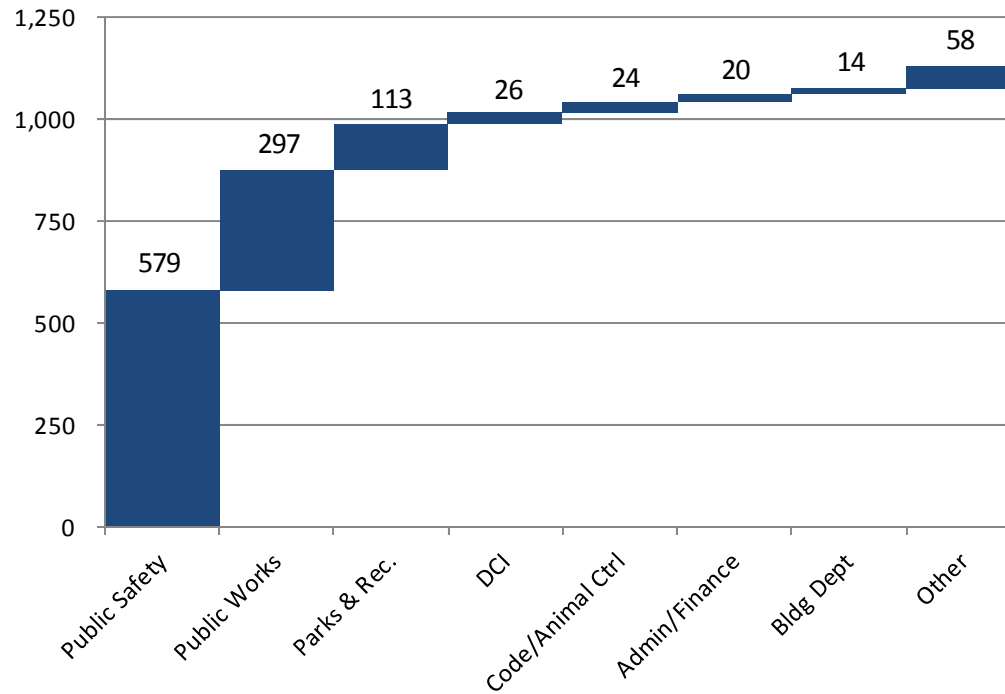


Full Time Employees - 2009 to 2013





Full Time Employees - December 31, 2013

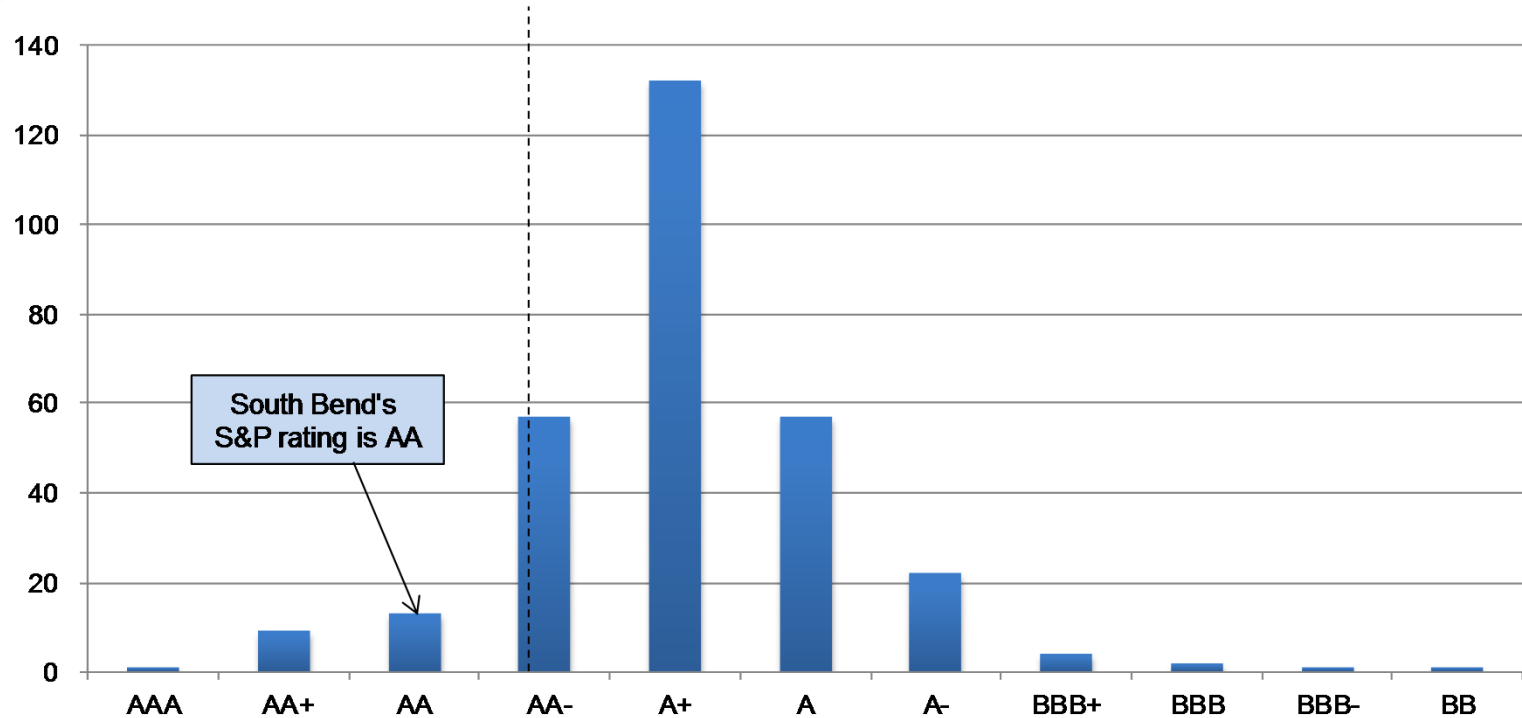


Activity	Total	Percent
Public Safety	579	51.19%
Public Works	297	26.26%
Parks & Rec.	113	9.99%
Community Investment	26	2.30%
Code / Animal Control	24	2.12%
Admin/Finance	20	1.77%
Building Department	14	1.24%
Other	58	5.13%
Total	1,131	100.00%

Other - Mayor, City Clerk, Common Council, Legal Department, Human Rights, and Morris/Palais



Indiana Local Government Standard & Poor's Bond Ratings January, 2014



S&P Bond Rating	Number of Units	Percent of Total	Local Governments
AAA	1	0.33%	State of Indiana
AA+	9	3.01%	Includes Carmel, East Noble School Corporation, Hamilton County, Westfield
AA	13	4.35%	Includes South Bend, Indianapolis, Fishers, Jasper, West Lafayette, Noblesville
AA-	57	19.06%	Includes Bloomington, Elkhart County, Fort Wayne, South Bend School Corp, Warsaw
A+	132	44.15%	Includes Elkhart, Saint Joseph County, Mishawaka, Michigan City, St. Joe Airport
A	57	19.06%	Includes Goshen, Hammond, Munster
A-	22	7.36%	Includes Lawrence, Valparaiso Parks & Recreation Dist., Hammond Schools
BBB+	4	1.34%	Includes Damon Run Conservancy District, Richland- Bean Blossom Comnty Sch Corp
BBB	2	0.67%	Munster Schools, Mount Vernon Schools
BBB-	1	0.33%	Pike County School Corp.
BB	1	0.33%	East Chicago
Total	299	100.00%	



S & P's General Obligation Ratings of Indiana Local Governments Second Class Cities as of January, 2014

	Obligor	Rating	Outlook
1	South Bend	AA	STABLE
2	Bloomington	AA-	STABLE
3	Columbus	AA-	STABLE
4	Fort Wayne	AA-	STABLE
5	Elkhart	A+	STABLE
6	Jeffersonville	A+	STABLE
7	Lafayette	A+	STABLE
8	Mishawaka	A+	STABLE
9	New Albany	A+	STABLE
10	Hammond	A	STABLE
11	Richmond	A	STABLE
12	Anderson	A-	STABLE
13	Lawrence	A-	NEGATIVE

Second Class City refers to Cities with population in excess of 35,000 residents and a City Council of 9 members.

Note: No public ratings of debt for Evansville, Gary, Greenwood, Kokomo, Muncie, Richmond, or Terre Haute. Fishers has a AA bond rating and will become a second class city on 1 January 2015.



South Bend is the highest rated Second Class City in the state of Indiana*

Key Factors in South Bend's strong Credit rating

- "Diverse local economy and position as a regional center."
- "Very strong financial operations."
- "Moderate overall debt burden."
- "The university [of Notre Dame] and two major health care systems help anchor the area economy."

Limiting Rating Factors

- "Income levels, at 70% of the national level."
- "Above-average unemployment rate."

* Second Class City refers to Cities with population in excess of 35,000



**Standard & Poor's General Obligation/General Obligation Equivalent Ratings
of Indiana Local Governments as of January 3, 2014**

	Obligor	Rating	Outlook
1	State of Indiana	AAA	STABLE
2	Boone Cnty	AA+	STABLE
3	Brownsburg Town (Hendricks County)	AA+	STABLE
4	Carmel	AA+	STABLE
5	Carmel Clay Pub Lib	AA+	STABLE
6	East Noble School Corporation	AA+	STABLE
7	Hamilton Cnty	AA+	STABLE
8	Hancock County	AA+	STABLE
9	Marion County Health & Hospital Corporation	AA+	STABLE
10	Westfield	AA+	STABLE
11	South Bend	AA	STABLE
12	Clay Twp	AA	STABLE
13	Fishers	AA	STABLE
14	Hamilton East Public Library	AA	STABLE
15	Hancock County Public Library	AA	STABLE
16	Indianapolis	AA	STABLE
17	Indianapolis Brd of Sch Comr	AA	STABLE
18	Jasper	AA	STABLE
19	Noblesville	AA	STABLE
20	Noblesville Redev Comm	AA	STABLE
21	Carmel Clay Sch Corp	AA	STABLE
22	West Lafayette	AA	STABLE
23	Winfield Town	AA	STABLE



Appendix

City of South Bend
Revenue Summary - 2008 to 2013
Prepared February 2014

Fund	Fund Name	2008 Actual (1)	2009 Actual (1)	2010 Actual	2011 Actual	2012 Actual	2013 Actual
City Controlled Funds							
General Fund							
101	GENERAL FUND	33,930,404	96,281,658	61,449,946	60,911,669	63,585,275	62,367,950
Special Revenue Funds							
102	RAINY DAY FUND	3,393,886	785,254	2,010,972	24,477	42,239	29,524
103	EXCESS LEVY	742	285	185,180	261	0	0
201	PARKS & RECREATION	6,177,677	17,628,799	11,566,177	11,989,053	12,275,385	11,768,204
202	MOTOR VEHICLE HIGHWAY	5,267,736	5,101,624	5,397,547	5,564,838	7,605,799	9,139,123
203	RECREATION - NONREVERTING	1,148,500	1,027,465	996,098	1,023,635	1,039,835	1,003,318
209	STUDEBAKER/OLIVER REVERTING GRANTS	388,269	251,058	683,781	411,454	5,485	3,712
210	ECONOMIC DEVELOPMENT STATE GRANTS	355,484	306,625	3,289,539	1,039,422	220,472	238,065
211	CED OPERATING FUND	0	0	0	2,484,129	2,093,423	2,491,611
212	CED FUND	9,305,084	4,672,752	7,520,251	6,106,647	4,159,815	4,483,441
216	POLICE STATE SEIZURES	49,975	42,274	31,634	41,271	29,005	27,470
217	GIFT, DONATION, BEQUEST	37,300	9,589	9,502	10,856	20,863	11,501
218	POLICE CURFEW VIOLATIONS	2,255	1,530	1,247	1,153	470	663
220	LAW ENFORCEMENT CONTINUING EDUCATION	394,274	339,490	661,879	297,899	279,858	194,529
227	LOSS RECOVERY FUND	4,462,214	441,935	16,091	224,246	21,894	3,845,643
249	PUBLIC SAFETY L.O.I.T.	0	0	6,083,195	5,510,917	6,789,333	6,582,642
250	GENERAL GRANT	1,160	319	15	0	0	0
251	LOCAL ROADS & STREETS	1,188,144	1,068,972	1,072,859	1,036,989	1,029,814	1,008,943
252	EXCESS WELFARE DISTRIBUTION	0	2,922,079	17,808	6,545	5,407	4
258	HUMAN RIGHTS - FEDERAL GRANT	166,616	135,088	198,614	154,253	184,948	178,148
271	EASTRACE WATERWAY	1,194	284	118	78	99	46
273	MORRIS PAC/PALAIS ROYALE MARKETING	14,491	18,693	14,408	4,118	5,039	7,113
280	POLICE BLOCK GRANTS	0	810,837	2,031	3,433	681	13
281	ECONOMIC DEVELOPMENT COMM - REV BONDS	0	0	88	926	133	93
289	HAZMAT	11,626	380	271	580	13	16,762
291	INDIANA RIVER RESCUE	12,774	22,800	32,669	26,545	65,408	66,068
292	POLICE GRANTS	202,215	55,056	0	49,038	111,796	162,837

City of South Bend
Revenue Summary - 2008 to 2013
Prepared February 2014

Fund	Fund Name	2008 Actual (1)	2009 Actual (1)	2010 Actual	2011 Actual	2012 Actual	2013 Actual
294	REGIONAL POLICE ACADEMY	21,856	15,471	26,075	24,048	13,822	21,013
295	COPS MORE GRANT	32,645	61,383	34,300	30,063	40,690	23,068
299	POLICE FEDERAL DRUG ENFORCEMENT	63,008	48,372	46,835	85,182	84,572	194,569
410	URBAN DEVELOPMENT ACTION GRANT (UDAG)	955,453	766,866	2,895,913	558,646	7,670	3,833
655	PROJECT RELEAF	434,395	431,018	429,290	431,438	432,956	435,940
705	POLICE K-9 UNIT	1,408	0	154	1,006	11	8
	Total Special Revenue Funds	34,090,381	36,966,298	43,224,541	37,143,146	36,566,935	41,937,905
	Debt Service Fund						
313	HALL OF FAME DEBT SERVICE	454,564	2,446,354	1,575,924	1,750,141	1,306,284	1,406,963
	Capital Project Funds						
288	EMS / FIRE DEPARTMENT CAPITAL	2,199,396	2,188,308	2,919,148	2,568,500	2,288,561	8,323,033
377	PROFESSIONAL SPORTS DEVELOPMENT	1,004,385	1,152,319	1,166,229	956,450	1,303,963	677,704
401	COVELESKI STADIUM CAPITAL	11,192	3,123	370	262	327	92
403	ZOO ENDOWMENT	4,354	250	2,095	3,757	13,211	176
404	COUNTY OPTION INCOME TAX	6,504,988	8,385,056	7,828,067	8,223,812	9,443,965	8,509,058
405	PARK NONREVERTING CAPITAL	227,253	200,255	195,200	250,691	203,742	228,721
406	CUMULATIVE CAPITAL DEVELOPMENT	588,689	1,616,313	765,152	630,877	603,408	552,148
407	CUMULATIVE CAPITAL IMPROVEMENT	550,534	530,574	515,648	484,580	449,238	446,579
408	ECONOMIC DEVELOPMENT INCOME TAX	4,330,228	4,060,012	9,330,188	7,948,566	9,673,476	8,785,077
412	MAJOR MOVES CONSTRUCTION	463,752	113,908	77,622	109,896	715,263	500,882
416	MORRIS PERFORMING ARTS CENTER CAPITAL	93,551	84,500	118,271	85,791	87,901	101,947
434	CREED FUND	1,022,878	613,910	419,363	734,607	654,444	244,899
450	PALAIS ROYALE HISTORIC PRESERVATION	17,009	33,274	13,805	14,320	12,113	15,561
677	HALL OF FAME CAPITAL	224,403	206,277	204,024	2,910	119,192	2,458
	Total Capital & Debt Service Funds	17,697,176	21,634,433	25,131,106	23,765,160	26,875,088	29,795,298
	Enterprise Funds						
600	CONSOLIDATED BUILDING DEPARTMENT	1,167,563	982,015	873,650	891,604	1,010,067	954,228

City of South Bend
Revenue Summary - 2008 to 2013
Prepared February 2014

Fund	Fund Name	2008 Actual (1)	2009 Actual (1)	2010 Actual	2011 Actual	2012 Actual	2013 Actual
601	PARKING GARAGES	1,004,156	1,070,566	1,048,884	1,074,230	923,966	971,598
610	SOLID WASTE OPERATIONS	4,344,468	4,755,199	4,795,272	4,829,373	5,087,349	5,407,945
611	SOLID WASTE CAPITAL	393,661	423,405	331,174	239,062	259,479	830,707
620	WATER WORKS OPERATIONS	13,993,027	14,207,162	14,226,351	14,149,682	15,598,809	15,109,623
622	WATER WORKS CAPITAL	1,085,219	915,192	277,977	1,345,040	3,791,481	13,709
623	WATER WORKS BOND CAPITAL	1,401	5,245,500	10,555	1,764	8,455,624	16,550
624	WATER WORKS CUSTOMER DEPOSIT	47,733	11,514	4,960	3,971	6,864	4,861
625	WATER WORKS SINKING FUND	3,839,568	3,272,172	3,557,260	3,556,581	1,646,743	2,056,004
626	WATER WORKS BOND RESERVE	0	0	121,162	305,401	885,285	253,988
629	WATER WORKS RESERVE - O & M	209,538	15,165	996,501	7,206	131,155	52,228
640	SEWER REPAIR INSURANCE	672,763	664,782	586,976	547,845	549,923	552,869
641	SEWAGE WORKS OPERATIONS	22,921,400	24,019,035	25,257,312	28,897,031	31,096,953	31,784,543
642	SEWAGE WORKS CAPITAL	2,983,573	2,780,287	1,301,577	13,524,497	4,496,026	194,410
643	SEWAGE WORKS RESERVE - O & M	118,399	27,752	10,034	409,583	15,457	211,332
644	WATER LEAK INSURANCE FUND	975,688	0	0	0	0	0
645	2006 SEWER BOND	24,204	33,912	97	12	0	0
647	2007 SEWER BOND	502,119	400,281	156,326	1,352	202	42
649	SEWAGE WORKS BOND SINKING	6,335,129	5,735,000	7,520,570	6,923,468	8,369,028	9,463,724
650	CLAY SEWAGE WORKS OPERATIONS	38,408	8,481	2	2	3	2
651	2007B SEWER BOND	469,876	142,314	30,308	2,989	575	69
653	SEWAGE WORKS DEBT SERVICE RESERVE	0	4,541,322	1,058,932	2,143,816	1,966,747	14,099
658	2010 SEWER BOND	0	0	9,522,985	18,528	4,348	216
659	2011 SEWER BOND	0	0	0	21,508,738	91,421	30,970
661	2012 SEWER BOND	0	0	0	0	25,196,371	65,016
663	2013 SEWER BOND	0	0	0	0	0	0
664	2013A COST OF ISSUANCE FUND	0	0	0	0	0	85,746
670	CENTURY CENTER	3,393,620	2,823,446	2,603,820	2,788,186	2,658,898	3,133,815
671	CENTURY CENTER CAPITAL ACCOUNT	0	0	0	0	1,444,422	675,315
	Total Enterprise Funds	64,521,513	72,074,502	74,292,685	103,169,961	113,687,196	71,883,608
	Internal Service Funds						

City of South Bend
Revenue Summary - 2008 to 2013
Prepared February 2014

Fund	Fund Name	2008 Actual (1)	2009 Actual (1)	2010 Actual	2011 Actual	2012 Actual	2013 Actual
222	CENTRAL SERVICES	3,509,704	3,103,125	3,281,537	3,341,396	6,708,059	7,254,876
226	LIABILITY INSURANCE	2,712,837	2,044,370	2,898,051	3,078,648	2,967,528	3,009,847
278	TAKE HOME VEHICLE POLICE	0	520,175	62,038	86,159	128,200	124,848
711	SELF-FUNDED EMPLOYEE BENEFITS	14,290,046	12,532,566	9,623,999	11,275,664	11,075,304	12,156,648
713	UNEMPLOYMENT COMPENSATION FUND	0	0	0	217,482	275,040	252,907
	Total Internal Service Funds	20,512,587	18,200,236	15,865,625	17,999,349	21,154,131	22,799,125
	Trust Funds						
701	FIREFIGHTERS PENSION	3,744,733	6,622,109	5,200,479	5,528,899	5,239,851	5,038,210
702	POLICE PENSION	4,075,113	7,571,010	5,810,871	6,492,500	6,751,423	5,874,865
703	POLICE/FIRE STATE PENS.	0	0	0	0	1,216,103	0
730	CITY CEMETARY TRUST FUND	1,474	357	150	118	202	138
	Total Trust Funds	7,821,320	14,193,476	11,011,500	12,021,517	13,207,579	10,913,213
	Total City Funds	178,573,381	259,350,603	230,975,403	255,010,802	275,076,204	239,697,098
	Redevelopment Commission Controlled Funds						
	Tax Increment Financing Funds						
324	TIF REVENUE - AIRPORT	1,781,158	11,723,053	22,051,980	13,319,602	12,667,604	16,026,663
414	TIF DISTRICT - SAMPLE-EWING GEN'L	5,876	0	0	0	0	0
420	TIF DISTRICT - SBCDA GENERAL	267,774	4,555,292	7,809,863	6,109,627	5,495,844	3,464,065
422	TIF DISTRICT - WEST WASHINGTON	16,175	359,961	862,008	434,226	426,635	495,043
425	TIF LEIGHTON PLAZA	156,860	144,332	147,012	113,095	131,799	159,289
426	TIF CENTRAL MEDICAL SERVICE AREA	57,442	933,885	3,540,910	1,714,266	1,623,756	1,233,918
429	TIF NORTHEAST DISTRICT	233	22,567	195,745	716,103	1,356,334	849,684
430	TIF SOUTHSIDE DEVELOPMENT AREA #1	3,095	357,382	4,102,951	1,819,106	3,891,739	2,421,638
431	TIF SSDA #2 - ERSKINE COMMONS	18	1,241,831	5,997,903	794,500	2,329	0
432	TIF SSDA #3 - ERSKINE VILLAGE	4,782	1,533,641	3,771,192	1,616,374	27,801	1,329,971
435	TIF DOUGLAS ROAD	0	1,303,937	619,818	306,299	286,436	324,393

City of South Bend
Revenue Summary - 2008 to 2013
Prepared February 2014

Fund	Fund Name	2008 Actual (1)	2009 Actual (1)	2010 Actual	2011 Actual	2012 Actual	2013 Actual
436	TIF NORTHEST RESIDENTIAL	0	0	1,817,307	2,448,369	2,524,259	2,271,188
	Total Tax Increment Financing Funds	2,293,413	22,175,881	50,916,689	29,391,567	28,434,536	28,575,852
	Redevelopment Funds						
305	SBCDA BOND PROCEEDS - 2003	188,939	34,171	8,832	2,657	0	0
428	REDEVELOPMENT DISTRICT CAPITAL - AEDA2003	10,213	2,725	1,202	0	0	0
433	REDEVELOPMENT ADMINISTRATION GENERAL	2,822	669	214	107	164	104
438	COVELESKI BOND CONSTRUCTION	0	0	4,980,000	5,268	0	0
439	CERTIFIED TECHNOLOGY PARK	0	0	0	812,791	3,571	2,866,234
454	AIRPORT URBAN ENTERPRISE ZONE	0	809,305	302,172	123,638	113,044	1,289
619	BLACKTHORN GOLF COURSE OPERATIONS	1,488,676	1,532,523	1,482,945	1,393,351	1,669,151	1,580,512
	Total Redevelopment Funds	1,690,650	2,379,393	6,775,365	2,337,812	1,785,930	4,448,139
	Debt Service Funds						
314	REDEV BOND - 1990 PUBLIC IMPROVEMENT	30,589	9,636	3,027	2,373	3,009	0
315	AIRPORT 2003 DEBT RESERVE	445,485	16,949	7,090	5,538	5,571	3,567
317	COVELESKI BOND DEBT RESERVE	0	0	498,000	1,277	2,470	1,725
319	REDEVELOPMENT BOND - BLACKTHORN GOLF	37,970	8,742	3,627	2,827	4,420	464
328	SBCDA 2003 DEBT RESERVE	254,235	9,768	4,053	640,792	8,258	5,959
	Total Debt Service Funds	768,279	45,095	515,797	652,807	23,728	11,715
	Total Redevelopment Commission Funds	4,752,342	24,600,369	58,207,851	32,382,186	30,244,194	33,035,706
	City Operations Total	183,325,723	283,950,972	289,183,254	287,392,988	305,320,398	272,732,804
	Less: Internal Service Funds	(20,512,587)	(18,200,236)	(15,865,625)	(17,999,349)	(21,154,131)	(22,799,125)
	Net Revenue	162,813,136	265,750,736	273,317,629	269,393,639	284,166,267	249,933,679

(1) Property taxes in the amount of \$65,855,836 for 2008 not collected until 2009 due to delay in tax billing.

City of South Bend
Revenue Crosswalk - 2013 Actual
Updated - February 2014

Fund	Fund Name	Total Actual	Property Taxes	Local Income Taxes	Other Taxes	Intergovernmental	Charges for Services	Bond Proceeds	Transfers In	Other Revenue
City Controlled Funds										
General Fund										
101	GENERAL FUND	62,367,950	36,251,397	0	3,119,610	5,221,212	3,173,718	0	11,769,385	2,832,629
Special Revenue Funds										
102	RAINY DAY FUND	29,524	0	0	0	0	0	0	0	29,524
103	EXCESS LEVY	0	0	0	0	0	0	0	0	0
201	PARKS & RECREATION	11,768,204	7,207,060	0	619,840	696,009	3,114,282	0	0	131,014
202	MOTOR VEHICLE HIGHWAY	9,139,123	0	0	0	5,051,334	340,065	0	3,626,882	120,842
203	RECREATION - NONREVERTING	1,003,318	0	0	0	0	888,733	0	0	114,585
209	STUDEBAKER/OLIVER REVERTING GRANTS	3,712	0	0	0	0	0	0	0	3,712
210	ECONOMIC DEVELOPMENT STATE GRANTS	238,065	0	0	0	0	0	0	0	238,065
211	CED OPERATING FUND	2,491,611	0	0	0	769,920	0	0	1,717,519	4,172
212	CED FUND	4,483,441	0	0	0	3,995,268	0	0	0	488,173
216	POLICE STATE SEIZURES	27,470	0	0	0	26,972	0	0	0	498
217	GIFT, DONATION, BEQUEST	11,501	0	0	0	0	0	0	0	11,501
218	POLICE CURFEW VIOLATIONS	663	0	0	0	0	0	0	0	663
220	LAW ENFORCEMENT CONTINUING EDUCATION	194,529	0	0	0	6,964	100,118	0	0	87,448
227	LOSS RECOVERY FUND	3,845,643	0	0	0	0	3,804,857	0	0	40,785
249	PUBLIC SAFETY L.O.I.T.	6,582,642	0	5,892,386	0	0	0	0	683,303	6,954
250	GENERAL GRANT	0	0	0	0	0	0	0	0	0
251	LOCAL ROADS & STREETS	1,008,943	0	0	0	1,001,871	825	0	0	6,247
252	EXCESS WELFARE DISTRIBUTION	4	0	0	0	0	0	0	0	4
258	HUMAN RIGHTS - FEDERAL GRANT	178,148	0	0	0	146,650	29,905	0	0	1,593
271	EASTRACE WATERWAY	46	0	0	0	0	0	0	0	46
273	MORRIS PAC/PALAIS ROYALE MARKETING	7,113	0	0	0	0	0	0	0	7,113
280	POLICE BLOCK GRANTS	13	0	0	0	0	0	0	0	13
281	ECONOMIC DEVELOPMENT COMM - REV BONDS	93	0	0	0	0	0	0	0	93
289	HAZMAT	16,762	0	0	0	0	16,722	0	0	40
291	INDIANA RIVER RESCUE	66,068	0	0	0	0	0	0	0	66,068
292	POLICE GRANTS	162,837	0	0	0	162,838	0	0	0	(1)
294	REGIONAL POLICE ACADEMY	21,013	0	0	0	0	20,745	0	0	268
295	COPS MORE GRANT	23,068	0	0	0	0	12,000	0	0	11,068
299	POLICE FEDERAL DRUG ENFORCEMENT	194,569	0	0	0	160,829	23,018	0	0	10,722
410	URBAN DEVELOPMENT ACTION GRANT (UDAG)	3,833	0	0	0	0	0	0	0	3,833
655	PROJECT RELEAF	435,940	0	0	0	0	433,026	0	0	2,914
705	POLICE K-9 UNIT	8	0	0	0	0	0	0	0	8
Total Special Revenue Funds		41,937,905	7,207,060	5,892,386	619,840	12,018,655	8,784,296	0	6,027,704	1,387,964
Debt Service Fund										

City of South Bend
Revenue Crosswalk - 2013 Actual
Updated - February 2014

Fund	Fund Name	Total Actual	Property Taxes	Local Income Taxes	Other Taxes	Intergovernmental	Charges for Services	Bond Proceeds	Transfers In	Other Revenue
313	HALL OF FAME DEBT SERVICE	1,406,963	1,268,179	0	67,316	71,468	0	0	0	0
	Capital Project Funds									
288	EMS / FIRE DEPARTMENT CAPITAL	8,323,033	0	0	0	0	2,951,030	5,335,537	0	36,466
377	PROFESSIONAL SPORTS DEVELOPMENT	677,704	0	0	0	597,111	0	0	0	80,593
401	COVELESKI STADIUM CAPITAL	92	0	0	0	0	0	0	0	92
403	ZOO ENDOWMENT	176	0	0	0	0	0	0	0	176
404	COUNTY OPTION INCOME TAX	8,509,058	0	7,846,939	0	0	501,108	0	0	161,011
405	PARK NONREVERTING CAPITAL	228,721	0	0	0	0	4,105	0	209,824	14,791
406	CUMULATIVE CAPITAL DEVELOPMENT	552,148	463,331	0	39,849	46,055	0	0	0	2,913
407	CUMULATIVE CAPITAL IMPROVEMENT	446,579	0	0	150,000	271,457	0	0	0	25,122
408	ECONOMIC DEVELOPMENT INCOME TAX	8,785,077	0	8,177,352	0	0	69,965	0	0	537,760
412	MAJOR MOVES CONSTRUCTION	500,882	0	0	0	0	0	0	0	500,882
416	MORRIS PERFORMING ARTS CENTER CAPITAL	101,947	0	0	0	0	100,535	0	0	1,412
434	CREED FUND	244,899	0	0	244,481	0	0	0	0	418
450	PALAIS ROYALE HISTORIC PRESERVATION	15,561	0	0	0	0	0	0	0	15,561
677	HALL OF FAME CAPITAL	2,458	0	0	0	0	0	0	0	2,458
	Total Capital & Debt Service Funds	29,795,298	1,731,510	16,024,291	501,646	986,090	3,626,744	5,335,537	209,824	1,379,656
	Enterprise Funds									
600	CONSOLIDATED BUILDING DEPARTMENT	954,228	0	0	0	0	952,364	0	0	1,864
601	PARKING GARAGES	971,598	0	0	0	0	871,899	0	0	99,699
610	SOLID WASTE OPERATIONS	5,407,945	0	0	0	178,820	5,224,684	0	0	4,441
611	SOLID WASTE CAPITAL	830,707	0	0	0	0	0	0	830,239	469
620	WATER WORKS OPERATIONS	15,109,623	0	0	0	0	15,016,078	0	13,891	79,654
622	WATER WORKS CAPITAL	13,709	0	0	0	0	0	0	0	13,709
623	WATER WORKS BOND CAPITAL	16,550	0	0	0	0	0	0	0	16,550
624	WATER WORKS CUSTOMER DEPOSIT	4,861	0	0	0	0	0	0	0	4,861
625	WATER WORKS SINKING FUND	2,056,004	0	0	0	0	0	0	2,053,940	2,064
626	WATER WORKS BOND RESERVE	253,988	0	0	0	0	0	0	249,221	4,767
629	WATER WORKS RESERVE - O & M	52,228	0	0	0	0	0	0	45,301	6,927
640	SEWER REPAIR INSURANCE	552,869	0	0	0	0	548,665	0	0	4,204
641	SEWAGE WORKS OPERATIONS	31,784,543	0	0	0	0	31,709,342	0	15,258	59,943
642	SEWAGE WORKS CAPITAL	194,410	0	0	0	0	0	0	0	194,410
643	SEWAGE WORKS RESERVE - O & M	211,332	0	0	0	0	0	0	200,296	11,036
644	WATER LEAK INSURANCE FUND	0	0	0	0	0	0	0	0	0
645	2006 SEWER BOND	0	0	0	0	0	0	0	0	0
647	2007 SEWER BOND	42	0	0	0	0	0	0	0	42
649	SEWAGE WORKS BOND SINKING	9,463,724	0	0	0	0	0	0	9,453,493	10,232
650	CLAY SEWAGE WORKS OPERATIONS	2	0	0	0	0	0	0	0	2
651	2007B SEWER BOND	69	0	0	0	0	0	0	0	69
653	SEWAGE WORKS DEBT SERVICE RESERVE	14,099	0	0	0	0	0	0	14,096	3

City of South Bend
Revenue Crosswalk - 2013 Actual
Updated - February 2014

Fund	Fund Name	Total Actual	Property Taxes	Local Income Taxes	Other Taxes	Intergovernmental	Charges for Services	Bond Proceeds	Transfers In	Other Revenue
658	2010 SEWER BOND	216	0	0	0	0	0	0	0	216
659	2011 SEWER BOND	30,970	0	0	0	0	0	0	0	30,970
661	2012 SEWER BOND	65,016	0	0	0	0	0	0	0	65,016
663	2013 SEWER BOND	0	0	0	0	0	0	0	0	0
664	2013A COST OF ISSUANCE FUND	85,746	0	0	0	0	0	85,740	0	5
670	CENTURY CENTER	3,133,815	0	0	1,313,436	0	110,884	0	0	1,709,495
671	CENTURY CENTER CAPITAL ACCOUNT	675,315	0	0	0	100,000	0	0	0	575,315
	Total Enterprise Funds	71,883,608	0	0	1,313,436	278,820	54,433,915	85,740	12,875,733	2,895,963
	Internal Service Funds									
222	CENTRAL SERVICES	7,254,876	0	0	0	0	7,216,169	0	0	38,707
226	LIABILITY INSURANCE	3,009,847	0	0	0	0	2,988,737	0	0	21,110
278	TAKE HOME VEHICLE POLICE	124,848	0	0	0	0	123,413	0	0	1,435
711	SELF-FUNDED EMPLOYEE BENEFITS	12,156,648	0	0	0	0	210,513	0	0	11,946,136
713	UNEMPLOYMENT COMPENSATION FUND	252,907	0	0	0	0	0	0	0	252,907
	Total Internal Service Funds	22,799,125	0	0	0	0	10,538,832	0	0	12,260,294
	Trust Funds									
701	FIREFIGHTERS PENSION	5,038,210	0	0	0	5,035,292	0	0	0	2,918
702	POLICE PENSION	5,874,865	0	0	0	5,863,697	230	0	0	10,938
703	POLICE/FIRE STATE PENS.	0	0	0	0	0	0	0	0	0
730	CITY CEMETARY TRUST FUND	138	0	0	0	0	0	0	0	138
	Total Trust Funds	10,913,213	0	0	0	10,898,990	230	0	0	13,993
	Total City Funds	239,697,098	45,189,966	21,916,677	5,554,532	29,403,767	80,557,734	5,421,277	30,882,646	20,770,499
	Redevelopment Commission Controlled Funds									
	Tax Increment Financing Funds									
324	TIF REVENUE - AIRPORT	16,026,663	13,340,354	0	0	0	2,239,714	0	279,530	167,065
414	TIF DISTRICT - SAMPLE-EWING GEN'L	0	0	0	0	0	0	0	0	0
420	TIF DISTRICT - SBCDA GENERAL	3,464,065	2,590,808	0	398,500	0	34,021	0	5,959	434,777
422	TIF DISTRICT - WEST WASHINGTON	495,043	493,608	0	0	0	0	0	0	1,435
425	TIF LEIGHTON PLAZA	159,289	0	0	0	0	0	0	0	159,289
426	TIF CENTRAL MEDICAL SERVICE AREA	1,233,918	1,221,676	0	0	0	0	0	0	12,242
429	TIF NORTHEAST DISTRICT	849,684	841,627	0	0	0	0	0	0	8,057
430	TIF SOUTHSIDE DEVELOPMENT AREA #1	2,421,638	2,404,416	0	0	0	0	0	0	17,222
431	TIF SSSA #2 - ERSKINE COMMONS	0	0	0	0	0	0	0	0	0
432	TIF SSSA #3 - ERSKINE VILLAGE	1,329,971	1,311,129	0	0	0	0	0	0	18,842
435	TIF DOUGLAS ROAD	324,393	323,939	0	0	0	0	0	0	454

City of South Bend
Revenue Crosswalk - 2013 Actual
Updated - February 2014

Fund	Fund Name	Total Actual	Property Taxes	Local Income Taxes	Other Taxes	Intergovernmental	Charges for Services	Bond Proceeds	Transfers In	Other Revenue
436	TIF NORTHEST RESIDENTIAL	2,271,188	2,262,765	0	0	0	0	0	0	8,423
	Total Tax Increment Financing Funds	28,575,852	24,790,322	0	398,500	0	2,273,735	0	285,489	827,806
	Redevelopment Funds									
305	SBCDA BOND PROCEEDS - 2003	0	0	0	0	0	0	0	0	0
428	REDEVELOPMENT DISTRICT CAPITAL - AEDA2003	0	0	0	0	0	0	0	0	0
433	REDEVELOPMENT ADMINISTRATION GENERAL	104	0	0	0	0	0	0	0	104
438	COVELESKI BOND CONSTRUCTION	0	0	0	0	0	0	0	0	0
439	CERTIFIED TECHNOLOGY PARK	2,866,234	0	0	0	2,859,027	0	0	0	7,207
454	AIRPORT URBAN ENTERPRISE ZONE	1,289	0	0	0	0	0	0	0	1,289
619	BLACKTHORN GOLF COURSE OPERATIONS	1,580,512	0	0	0	0	1,530,012	0	50,500	0
	Total Redevelopment Funds	4,448,139	0	0	0	2,859,027	1,530,012	0	50,500	8,600
	Debt Service Funds									
314	REDEV BOND - 1990 PUBLIC IMPROVEMENT	0	0	0	0	0	0	0	0	0
315	AIRPORT 2003 DEBT RESERVE	3,567	0	0	0	0	0	0	0	3,567
317	COVELESKI BOND DEBT RESERVE	1,725	0	0	0	0	0	0	0	1,725
319	REDEVELOPMENT BOND - BLACKTHORN GOLF	464	0	0	0	0	0	0	0	464
328	SBCDA 2003 DEBT RESERVE	5,959	0	0	0	0	0	0	0	5,959
	Total Debt Service Funds	11,715	0	0	0	0	0	0	0	11,715
	Total Redevelopment Commission Funds	33,035,706	24,790,322	0	398,500	2,859,027	3,803,746	0	335,989	848,121
	City Operations Total	272,732,804	69,980,288	21,916,677	5,953,032	32,262,794	84,361,480	5,421,277	31,218,635	21,618,620
	Less: Internal Service Funds	(22,799,125)	0	0	0	0	(10,538,832)	0	0	(12,260,294)
	Net Revenue	249,933,679	69,980,288	21,916,677	5,953,032	32,262,794	73,822,648	5,421,277	31,218,635	9,358,327
	Percent	100.00%	28.00%	8.77%	2.38%	12.91%	29.54%	2.17%	12.49%	3.74%

City of South Bend
Expenditure Summary - 2008 to 2013
Updated - February 2014

Fund	Fund Name	2008 Actual	2009 Actual	2010 Actual	2011 Actual	2012 Actual	2013 Actual
City Controlled Funds							
General Fund							
101	GENERAL FUND	66,503,546	61,327,868	59,241,185	61,438,862	63,399,284	62,326,328
Special Revenue Funds							
102	RAINY DAY FUND	0	0	0	0	0	0
103	EXCESS LEVY	0	0	0	219,363	0	0
201	PARKS & RECREATION	12,424,641	10,709,907	11,034,333	11,758,626	12,012,845	12,392,940
202	MOTOR VEHICLE HIGHWAY	5,124,138	4,824,220	6,266,127	6,162,905	6,747,419	7,729,988
203	RECREATION - NONREVERTING	1,070,508	1,048,560	1,023,374	1,066,476	977,654	896,201
209	STUDEBAKER/OLIVER REVERTING GRANTS	235,856	147,812	891,081	974,694	162,602	0
210	ECONOMIC DEVELOPMENT STATE GRANTS	272,799	214,198	2,711,824	1,709,445	207,065	807,570
211	CED OPERATING FUND	0	0	0	1,968,133	2,025,585	2,168,133
212	CED FUND	7,207,638	7,351,801	8,485,805	6,293,804	3,940,253	4,406,331
216	POLICE STATE SEIZURES	11,606	7,625	40,785	16,502	10,787	13,729
217	GIFT, DONATION, BEQUEST	0	20,617	0	0	4,259	0
218	POLICE CURFEW VIOLATIONS	3,769	1,777	0	0	0	0
220	LAW ENFORCEMENT CONTINUING EDUCATION	244,077	196,512	576,018	200,637	233,892	300,508
227	LOSS RECOVERY FUND	0	264,637	286,795	99,400	173,988	251,171
249	PUBLIC SAFETY L.O.I.T.	0	0	4,940,000	4,976,969	5,476,534	7,540,389
250	GENERAL GRANT	0	54,786	5,250	163	0	0
251	LOCAL ROADS & STREETS	1,290,819	1,445,105	1,569,984	2,005,741	541,522	781,866
252	EXCESS WELFARE DISTRIBUTION	0	0	674,000	0	2,276,693	0
258	HUMAN RIGHTS - FEDERAL GRANT	161,957	144,247	153,710	156,933	168,548	197,537
271	EASTRACE WATERWAY	231	1,503	204	9,915	8,009	0
273	MORRIS PAC/PALAIS ROYALE MARKETING	2,764	14,753	14,605	0	0	7,891
280	POLICE BLOCK GRANTS	0	218,850	157,498	312,292	124,539	0
281	ECONOMIC DEVELOPMENT COMM - REV BONDS	0	0	0	0	0	0
289	HAZMAT	12,669	3,004	6,366	448	0	3,237
291	INDIANA RIVER RESCUE	31,034	16,881	33,752	20,896	17,736	89,770
292	POLICE GRANTS	181,902	123,403	0	49,038	14,796	56,454

City of South Bend
Expenditure Summary - 2008 to 2013
Updated - February 2014

Fund	Fund Name	2008 Actual	2009 Actual	2010 Actual	2011 Actual	2012 Actual	2013 Actual
294	REGIONAL POLICE ACADEMY	21,076	18,317	13,899	27,104	16,369	26,744
295	COPS MORE GRANT	9,412	56,152	50,318	49,446	39,297	17,014
299	POLICE FEDERAL DRUG ENFORCEMENT	97,624	95,279	90,310	31,052	60,491	144,750
410	URBAN DEVELOPMENT ACTION GRANT (UDAG)	1,916,006	518,394	6,300,000	472,140	200,451	0
655	PROJECT RELEAF	363,072	363,167	339,649	344,798	340,652	357,767
705	POLICE K-9 UNIT	1,283	1,500	0	0	356	625
	Total Special Revenue Funds	30,684,881	27,863,007	45,665,687	38,926,920	35,782,342	38,190,615
	Debt Service Fund						
313	HALL OF FAME DEBT SERVICE	1,413,515	1,406,000	1,405,500	1,405,000	1,330,465	1,268,000
	Capital Project Funds						
288	EMS / FIRE DEPARTMENT CAPITAL	919,141	692,317	2,104,065	2,065,780	2,278,472	8,296,495
377	PROFESSIONAL SPORTS DEVELOPMENT	889,620	866,095	838,574	995,423	1,365,560	876,470
401	COVELESKI STADIUM CAPITAL	61,822	138,288	9,790	14,991	56,162	0
403	ZOO ENDOWMENT	0	0	0	0	0	0
404	COUNTY OPTION INCOME TAX	6,465,672	4,132,545	7,208,580	6,142,472	8,324,409	8,930,424
405	PARK NONREVERTING CAPITAL	247,425	237,633	193,488	220,952	178,387	148,214
406	CUMULATIVE CAPITAL DEVELOPMENT	1,542,020	1,252,118	1,394,776	501,538	589,869	602,118
407	CUMULATIVE CAPITAL IMPROVEMENT	565,611	584,936	592,378	594,000	402,277	367,575
408	ECONOMIC DEVELOPMENT INCOME TAX	4,053,471	3,257,589	3,949,573	8,474,479	8,069,327	7,927,361
409	CUMULATIVE SEWER	0	0	0	80,224	0	0
412	MAJOR MOVES CONSTRUCTION	131,735	3,641,472	962,470	336,666	2,142,921	1,253,680
416	MORRIS PERFORMING ARTS CENTER CAPITAL	58,138	50,195	42,167	120,683	172,417	41,405
434	CREED FUND	1,535,883	1,408,898	1,012,417	848,322	878,554	458,949
450	PALAIS ROYALE HISTORIC PRESERVATION	0	3,967	7,258	3,983	0	20,470
677	HALL OF FAME CAPITAL	12,581	51,713	202,924	168,262	274,558	63,137
	Total Capital & Debt Service Funds	17,896,634	17,723,766	19,923,960	21,972,775	26,063,378	30,254,298
	Enterprise Funds						

City of South Bend
Expenditure Summary - 2008 to 2013
Updated - February 2014

Fund	Fund Name	2008 Actual	2009 Actual	2010 Actual	2011 Actual	2012 Actual	2013 Actual
600	CONSOLIDATED BUILDING DEPARTMENT	1,104,563	1,088,264	932,360	858,741	913,173	1,006,337
601	PARKING GARAGES	733,529	724,316	623,583	752,728	983,411	942,855
610	SOLID WASTE OPERATIONS	4,477,767	4,276,259	4,290,837	4,763,336	5,086,439	5,804,066
611	SOLID WASTE CAPITAL	397,680	423,027	315,262	240,749	275,191	712,375
620	WATER WORKS OPERATIONS	14,829,974	13,946,540	14,534,297	15,048,859	15,557,806	13,374,286
622	WATER WORKS CAPITAL	931,580	807,866	586,289	399,864	1,049,127	627,301
623	WATER WORKS BOND CAPITAL	817,944	1,015,134	3,301,537	794,336	2,799,602	5,006,757
624	WATER WORKS CUSTOMER DEPOSIT	59,214	11,514	4,960	3,971	6,864	4,901
625	WATER WORKS SINKING FUND	3,848,386	3,277,319	3,548,912	3,558,412	1,651,501	2,055,303
626	WATER WORKS BOND RESERVE	0	0	161	0	0	0
629	WATER WORKS RESERVE - O & M	60,947	15,165	8,691	912,337	9,729	6,927
640	SEWER REPAIR INSURANCE	666,690	630,605	279,535	268,681	309,775	351,024
641	SEWAGE WORKS OPERATIONS	23,426,749	26,246,904	22,661,359	34,566,327	29,140,481	28,828,365
642	SEWAGE WORKS CAPITAL	2,972,779	2,356,528	1,625,220	3,994,549	5,406,213	5,012,953
643	SEWAGE WORKS RESERVE - O & M	118,399	454,752	10,034	8,429	74,960	11,036
644	WATER LEAK INSURANCE FUND	824,080	0	0	0	0	0
645	2006 SEWER BOND	1,796,047	784,893	16,957	14,371	0	12
647	2007 SEWER BOND	7,720,398	4,495,468	509,982	839,292	47,861	17,942
649	SEWAGE WORKS BOND SINKING	6,349,348	5,749,779	6,892,171	6,904,519	8,225,040	9,516,963
650	CLAY SEWAGE WORKS OPERATIONS	0	1,086,322	0	0	0	698
651	2007B SEWER BOND	131,985	5,126,327	10,046,404	1,506,696	189,122	39,624
653	SEWAGE WORKS DEBT SERVICE RESERVE	0	0	0	0	0	2,438,087
658	2010 SEWER BOND	0	0	799,341	6,692,030	1,942,289	110,204
659	2011 SEWER BOND	0	0	0	1,772,942	9,660,707	2,348,981
661	2012 SEWER BOND	0	0	0	0	1,949,483	5,012,877
663	2013 SEWER BOND	0	0	0	0	0	0
664	2013A COST OF ISSUANCE FUND	0	0	0	0	0	81,279
670	CENTURY CENTER	3,192,009	2,831,792	3,157,167	2,678,401	3,740,014	3,362,598
671	CENTURY CENTER CAPITAL ACCOUNT	0	0	0	0	169,545	192,495
	Total Enterprise Funds	74,460,068	75,348,774	74,145,059	86,579,570	89,188,333	86,866,246

City of South Bend
Expenditure Summary - 2008 to 2013
Updated - February 2014

Fund	Fund Name	2008 Actual	2009 Actual	2010 Actual	2011 Actual	2012 Actual	2013 Actual
	Internal Service Funds						
222	CENTRAL SERVICES	2,847,875	2,683,117	2,576,373	2,754,635	6,693,261	7,306,386
226	LIABILITY INSURANCE	2,084,540	2,301,379	2,946,631	2,302,324	2,173,471	3,069,761
278	TAKE HOME VEHICLE POLICE	0	0	320,762	8,164	75,842	63,700
711	SELF-FUNDED EMPLOYEE BENEFITS	10,528,854	11,114,857	10,032,616	11,572,529	12,500,734	13,923,392
713	UNEMPLOYMENT COMPENSATION FUND	0	0	0	226,891	193,066	65,443
	Total Internal Service Funds	15,461,269	16,099,353	15,876,382	16,864,543	21,636,374	24,428,682
	Trust Funds						
701	FIREFIGHTERS PENSION	5,478,910	5,548,399	5,548,294	5,627,377	5,608,547	5,447,975
702	POLICE PENSION	6,115,087	6,097,952	6,251,596	6,696,139	6,606,662	6,474,836
730	CITY CEMETARY TRUST FUND	0	1,500	0	0	0	4,316
	Total Trust Funds	11,593,997	11,647,851	11,799,890	12,323,516	12,215,209	11,927,127
	Total City Funds	216,600,395	210,010,619	226,652,163	238,106,186	248,284,920	253,993,296
	Redevelopment Commission Controlled Funds						
	Tax Increment Financing Funds						
324	TIF REVENUE - AIRPORT	5,836,656	10,629,012	10,709,050	18,546,496	16,240,594	9,227,906
414	TIF DISTRICT - SAMPLE-EWING GEN'L	641,938	0	0	0	0	0
420	TIF DISTRICT - SBCDA GENERAL	4,537,039	4,231,348	4,788,263	6,535,311	7,147,163	3,697,473
422	TIF DISTRICT - WEST WASHINGTON	361,544	216,543	8,030	658,344	906,749	333,810
425	TIF LEIGHTON PLAZA	123,967	137,292	160,582	162,864	135,883	121,617
426	TIF CENTRAL MEDICAL SERVICE AREA	74,129	947	2,199,591	2,094,737	1,262,380	1,860,607
429	TIF NORTHEAST DISTRICT	0	1,500	7,744	36,795	38,788	60,517
430	TIF SOUTHSIDE DEVELOPMENT AREA #1	282,515	24,844	490,752	2,235,661	2,247,813	4,376,766
431	TIF SSSA #2 - ERSKINE COMMONS	6,031	476,368	2,738,814	3,420,000	1,401,397	0
432	TIF SSSA #3 - ERSKINE VILLAGE	776,591	243,614	496,659	496,080	149,809	490,005
435	TIF DOUGLAS ROAD	13,926	1,180,252	586,723	270,424	318,183	190,718

City of South Bend
Expenditure Summary - 2008 to 2013
Updated - February 2014

Fund	Fund Name	2008 Actual	2009 Actual	2010 Actual	2011 Actual	2012 Actual	2013 Actual
436	TIF NORTHEST RESIDENTIAL	0	0	0	2,391,373	897,251	3,218,420
	Total Tax Increment Financing Funds	12,654,336	17,141,720	22,186,208	36,848,085	30,746,010	23,577,839
	Redevelopment Funds						
305	SBCDA BOND PROCEEDS - 2003	1,727,117	1,280,975	1,782,568	1,333,430	0	0
428	REDEVELOPMENT DISTRICT CAPITAL - AEDA2003	82,041	404,576	0	0	0	0
433	REDEVELOPMENT ADMINISTRATION GENERAL	17,189	3,551	36,141	5,071	3,213	5,798
438	COVELESKI BOND CONSTRUCTION	0	0	520,410	4,464,858	0	0
439	CERTIFIED TECHNOLOGY PARK	0	0	0	0	0	0
454	AIRPORT URBAN ENTERPRISE ZONE	0	571,164	343,590	58,322	0	0
619	BLACKTHORN GOLF COURSE OPERATIONS	2,180,892	2,148,499	2,103,301	2,152,477	2,331,825	1,745,117
	Total Redevelopment Funds	4,007,239	4,408,765	4,786,010	8,014,158	2,335,038	1,750,915
	Debt Service Funds						
314	REDEV BOND - 1990 PUBLIC IMPROVEMENT	37,589	7,136	3,027	2,373	825,509	0
315	AIRPORT 2003 DEBT RESERVE	61,564	16,949	7,090	886,240	5,571	3,567
317	COVELESKI BOND DEBT RESERVE	0	0	0	0	0	0
319	REDEVELOPMENT BOND - BLACKTHORN GOLF	36,470	8,742	3,627	2,827	658,420	326,464
328	SBCDA 2003 DEBT RESERVE	35,225	9,768	4,053	0	8,258	5,959
	Total Debt Service Funds	170,848	42,595	17,797	891,440	1,497,758	335,990
	Total Redevelopment Commission Funds	16,832,423	21,593,080	26,990,015	45,753,683	34,578,806	25,664,744
	City Operations Total	233,432,818	231,603,699	253,642,178	283,859,869	282,863,726	279,658,040
	Less: Internal Service Funds	(15,461,269)	(16,099,353)	(15,876,382)	(16,864,543)	(21,636,374)	(24,428,682)
	Net Expenditures	217,971,549	215,504,346	237,765,796	266,995,326	261,227,352	255,229,358

City of South Bend
Expenditure Crosswalk - 2013 Actual
Updated - February 2014

Fund	Fund Name	Total Actual	General Government	Public Safety	Economic Development	Culture & Recreation	Engineering/ Streets	Water & Sewer	Code & Sanitation	Internal Service	Building Department
City Controlled Funds											
General Fund											
101	GENERAL FUND	62,326,328	4,640,752	52,315,109	0	1,322,096	1,409,625	0	2,638,745	0	0
Special Revenue Funds											
102	RAINY DAY FUND	0	0	0	0	0	0	0	0	0	0
103	EXCESS LEVY	0	0	0	0	0	0	0	0	0	0
201	PARKS & RECREATION	12,392,940	0	0	0	12,392,940	0	0	0	0	0
202	MOTOR VEHICLE HIGHWAY	7,729,988	0	0	0	0	7,729,988	0	0	0	0
203	RECREATION - NONREVERTING	896,201	0	0	896,201	0	0	0	0	0	0
209	STUDEBAKER/OLIVER REVERTING GRANTS	0	0	0	0	0	0	0	0	0	0
210	ECONOMIC DEVELOPMENT STATE GRANTS	807,570	0	0	807,570	0	0	0	0	0	0
211	CED OPERATING FUND	2,168,133	0	0	2,168,133	0	0	0	0	0	0
212	CED FUND	4,406,331	0	0	4,406,331	0	0	0	0	0	0
216	POLICE STATE SEIZURES	13,729	0	13,729	0	0	0	0	0	0	0
217	GIFT, DONATION, BEQUEST	0	0	0	0	0	0	0	0	0	0
218	POLICE CURFEW VIOLATIONS	0	0	0	0	0	0	0	0	0	0
220	LAW ENFORCEMENT CONTINUING EDUCATION	300,508	0	300,508	0	0	0	0	0	0	0
227	LOSS RECOVERY FUND	251,171	0	0	0	0	0	251,171	0	0	0
249	PUBLIC SAFETY L.O.I.T.	7,540,389	0	7,540,389	0	0	0	0	0	0	0
250	GENERAL GRANT	0	0	0	0	0	0	0	0	0	0
251	LOCAL ROADS & STREETS	781,866	0	0	0	0	781,866	0	0	0	0
252	EXCESS WELFARE DISTRIBUTION	0	0	0	0	0	0	0	0	0	0
258	HUMAN RIGHTS - FEDERAL GRANT	197,537	197,537	0	0	0	0	0	0	0	0
271	EASTRACE WATERWAY	0	0	0	0	0	0	0	0	0	0
273	MORRIS PAC/PALAIS ROYALE MARKETING	7,891	0	0	0	7,891	0	0	0	0	0
280	POLICE BLOCK GRANTS	0	0	0	0	0	0	0	0	0	0
281	ECONOMIC DEVELOPMENT COMM - REV BONDS	0	0	0	0	0	0	0	0	0	0
289	HAZMAT	3,237	0	3,237	0	0	0	0	0	0	0
291	INDIANA RIVER RESCUE	89,770	0	89,770	0	0	0	0	0	0	0
292	POLICE GRANTS	56,454	0	56,454	0	0	0	0	0	0	0
294	REGIONAL POLICE ACADEMY	26,744	0	26,744	0	0	0	0	0	0	0
295	COPS MORE GRANT	17,014	0	17,014	0	0	0	0	0	0	0
299	POLICE FEDERAL DRUG ENFORCEMENT	144,750	0	144,750	0	0	0	0	0	0	0
410	URBAN DEVELOPMENT ACTION GRANT (UDAG)	0	0	0	0	0	0	0	0	0	0
655	PROJECT RELEAF	357,767	0	0	0	0	357,767	0	0	0	0
705	POLICE K-9 UNIT	625	0	625	0	0	0	0	0	0	0
	Total Special Revenue Funds	38,190,615	197,537	8,193,220	8,278,235	12,400,831	8,869,621	251,171	0	0	0
Debt Service Fund											
313	HALL OF FAME DEBT SERVICE	1,268,000	0	0	0	1,268,000	0	0	0	0	0
Capital Project Funds											
288	EMS / FIRE DEPARTMENT CAPITAL	8,296,495	0	8,296,495	0	0	0	0	0	0	0
377	PROFESSIONAL SPORTS DEVELOPMENT	876,470	0	0	0	876,470	0	0	0	0	0
401	COVELESKI STADIUM CAPITAL	0	0	0	0	0	0	0	0	0	0
403	ZOO ENDOWMENT	0	0	0	0	0	0	0	0	0	0

City of South Bend
Expenditure Crosswalk - 2013 Actual
Updated - February 2014

Fund	Fund Name	Total Actual	General Government	Public Safety	Economic Development	Culture & Recreation	Engineering/ Streets	Water & Sewer	Code & Sanitation	Internal Service	Building Department
404	COUNTY OPTION INCOME TAX	8,930,424	3,949,148	1,123,423	4,411	339,333	3,514,110	0	0	0	0
405	PARK NONREVERTING CAPITAL	148,214	0	0	0	148,214	0	0	0	0	0
406	CUMULATIVE CAPITAL DEVELOPMENT	602,118	0	602,118	0	0	0	0	0	0	0
407	CUMULATIVE CAPITAL IMPROVEMENT	367,575	0	0	0	367,575	0	0	0	0	0
408	ECONOMIC DEVELOPMENT INCOME TAX	7,927,361	3,993,859	741,522	160,142	32,559	2,700,000	0	299,279	0	0
409	CUMULATIVE SEWER	0	0	0	0	0	0	0	0	0	0
412	MAJOR MOVES CONSTRUCTION	1,253,680	0	0	626,600	0	627,081	0	0	0	0
416	MORRIS PERFORMING ARTS CENTER CAPITAL	41,405	0	0	0	41,405	0	0	0	0	0
434	CREED FUND	458,949	0	0	458,949	0	0	0	0	0	0
450	PALAIS ROYALE HISTORIC PRESERVATION	20,470	0	0	0	20,470	0	0	0	0	0
677	HALL OF FAME CAPITAL	63,137	0	0	0	63,137	0	0	0	0	0
	Total Capital & Debt Service Funds	30,254,298	7,943,007	10,763,558	1,250,101	3,157,163	6,841,190	0	299,279	0	0
	Enterprise Funds										
600	CONSOLIDATED BUILDING DEPARTMENT	1,006,337	0	0	0	0	0	0	0	0	1,006,337
601	PARKING GARAGES	942,855	0	0	942,855	0	0	0	0	0	0
610	SOLID WASTE OPERATIONS	5,804,066	0	0	0	0	0	0	5,804,066	0	0
611	SOLID WASTE CAPITAL	712,375	0	0	0	0	0	0	712,375	0	0
620	WATER WORKS OPERATIONS	13,374,286	0	0	0	0	0	13,374,286	0	0	0
622	WATER WORKS CAPITAL	627,301	0	0	0	0	0	627,301	0	0	0
623	WATER WORKS BOND CAPITAL	5,006,757	0	0	0	0	0	5,006,757	0	0	0
624	WATER WORKS CUSTOMER DEPOSIT	4,901	0	0	0	0	0	4,901	0	0	0
625	WATER WORKS SINKING FUND	2,055,303	0	0	0	0	0	2,055,303	0	0	0
626	WATER WORKS BOND RESERVE	0	0	0	0	0	0	0	0	0	0
629	WATER WORKS RESERVE - O & M	6,927	0	0	0	0	0	6,927	0	0	0
640	SEWER REPAIR INSURANCE	351,024	0	0	0	0	0	351,024	0	0	0
641	SEWAGE WORKS OPERATIONS	28,828,365	0	0	0	0	0	28,828,365	0	0	0
642	SEWAGE WORKS CAPITAL	5,012,953	0	0	0	0	0	5,012,953	0	0	0
643	SEWAGE WORKS RESERVE - O & M	11,036	0	0	0	0	0	11,036	0	0	0
644	WATER LEAK INSURANCE FUND	0	0	0	0	0	0	0	0	0	0
645	2006 SEWER BOND	12	0	0	0	0	0	12	0	0	0
647	2007 SEWER BOND	17,942	0	0	0	0	0	17,942	0	0	0
649	SEWAGE WORKS BOND SINKING	9,516,963	0	0	0	0	0	9,516,963	0	0	0
650	CLAY SEWAGE WORKS OPERATIONS	698	0	0	0	0	0	698	0	0	0
651	2007B SEWER BOND	39,624	0	0	0	0	0	39,624	0	0	0
653	SEWAGE WORKS DEBT SERVICE RESERVE	2,438,087	0	0	0	0	0	2,438,087	0	0	0
658	2010 SEWER BOND	110,204	0	0	0	0	0	110,204	0	0	0
659	2011 SEWER BOND	2,348,981	0	0	0	0	0	2,348,981	0	0	0
661	2012 SEWER BOND	5,012,877	0	0	0	0	0	5,012,877	0	0	0
663	2013 SEWER BOND	0	0	0	0	0	0	0	0	0	0
664	2013A COST OF ISSUANCE	81,279	0	0	0	0	0	81,279	0	0	0
670	CENTURY CENTER	3,362,598	0	0	0	3,362,598	0	0	0	0	0
671	CENTURY CENTER CAPITAL ACCOUNT	192,495	0	0	0	192,495	0	0	0	0	0
	Total Enterprise Funds	86,866,246	0	0	942,855	3,555,093	0	74,845,520	6,516,442	0	1,006,337
	Internal Service Funds										
222	CENTRAL SERVICES	7,306,386	0	0	0	0	0	0	0	7,306,386	0
226	LIABILITY INSURANCE	3,069,761	0	0	0	0	0	0	0	3,069,761	0

City of South Bend
Expenditure Crosswalk - 2013 Actual
Updated - February 2014

Fund	Fund Name	Total Actual	General Government	Public Safety	Economic Development	Culture & Recreation	Engineering/ Streets	Water & Sewer	Code & Sanitation	Internal Service	Building Department
278	TAKE HOME VEHICLE POLICE	63,700	0	0	0	0	0	0	0	63,700	0
711	SELF-FUNDED EMPLOYEE BENEFITS	13,923,392	0	0	0	0	0	0	0	13,923,392	0
713	UNEMPLOYMENT COMPENSATION FUND	65,443	0	0	0	0	0	0	0	65,443	0
	Total Internal Service Funds	24,428,682	0	0	0	0	0	0	0	24,428,682	0
	Trust Funds										
701	FIREFIGHTERS PENSION	5,447,975	0	5,447,975	0	0	0	0	0	0	0
702	POLICE PENSION	6,474,836	0	6,474,836	0	0	0	0	0	0	0
730	CITY CEMETARY TRUST FUND	4,316	0	0	0	4,316	0	0	0	0	0
	Total Trust Funds	11,927,127	0	11,922,811	0	4,316	0	0	0	0	0
	Total City Funds	253,993,296	12,781,296	83,194,698	10,471,191	20,439,499	17,120,436	75,096,691	9,454,466	24,428,682	1,006,337
	Redevelopment Commission Controlled Funds										
	Tax Increment Financing Funds										
324	TIF REVENUE - AIRPORT	9,227,906	0	0	9,227,906	0	0	0	0	0	0
414	TIF DISTRICT - SAMPLE-EWING GEN'L	0	0	0	0	0	0	0	0	0	0
420	TIF DISTRICT - SBCDA GENERAL	3,697,473	0	0	3,697,473	0	0	0	0	0	0
422	TIF DISTRICT - WEST WASHINGTON	333,810	0	0	333,810	0	0	0	0	0	0
425	TIF LEIGHTON PLAZA	121,617	0	0	121,617	0	0	0	0	0	0
426	TIF CENTRAL MEDICAL SERVICE AREA	1,860,607	0	0	1,860,607	0	0	0	0	0	0
429	TIF NORTHEAST DISTRICT	60,517	0	0	60,517	0	0	0	0	0	0
430	TIF SOUTHSIDE DEVELOPMENT AREA #1	4,376,766	0	0	4,376,766	0	0	0	0	0	0
431	TIF SSDA #2 - ERSKINE COMMONS	0	0	0	0	0	0	0	0	0	0
432	TIF SSDA #3 - ERSKINE VILLAGE	490,005	0	0	490,005	0	0	0	0	0	0
435	TIF DOUGLAS ROAD	190,718	0	0	190,718	0	0	0	0	0	0
436	TIF NORTHEAST RESIDENTIAL	3,218,420	0	0	3,218,420	0	0	0	0	0	0
	Total Tax Increment Financing Funds	23,577,839	0	0	23,577,839	0	0	0	0	0	0
	Redevelopment Funds										
305	SBCDA BOND PROCEEDS - 2003	0	0	0	0	0	0	0	0	0	0
428	REDEVELOPMENT DISTRICT CAPITAL - AEDA2003	0	0	0	0	0	0	0	0	0	0
433	REDEVELOPMENT ADMINISTRATION GENERAL	5,798	0	0	5,798	0	0	0	0	0	0
438	COVELESKI BOND CONSTRUCTION	0	0	0	0	0	0	0	0	0	0
439	CERTIFIED TECHNOLOGY PARK	0	0	0	0	0	0	0	0	0	0
454	AIRPORT URBAN ENTERPRISE ZONE	0	0	0	0	0	0	0	0	0	0
619	BLACKTHORN GOLF COURSE OPERATIONS	1,745,117	0	0	0	1,745,117	0	0	0	0	0
	Total Redevelopment Funds	1,750,915	0	0	5,798	1,745,117	0	0	0	0	0
	Debt Service Funds										
314	REDEV BOND - 1990 PUBLIC IMPROVEMENT	0	0	0	0	0	0	0	0	0	0
315	AIRPORT 2003 DEBT RESERVE	3,567	0	0	3,567	0	0	0	0	0	0
319	REDEVELOPMENT BOND - BLACKTHORN GOLF	326,464	0	0	326,464	0	0	0	0	0	0
328	SBCDA 2003 DEBT RESERVE	5,959	0	0	5,959	0	0	0	0	0	0

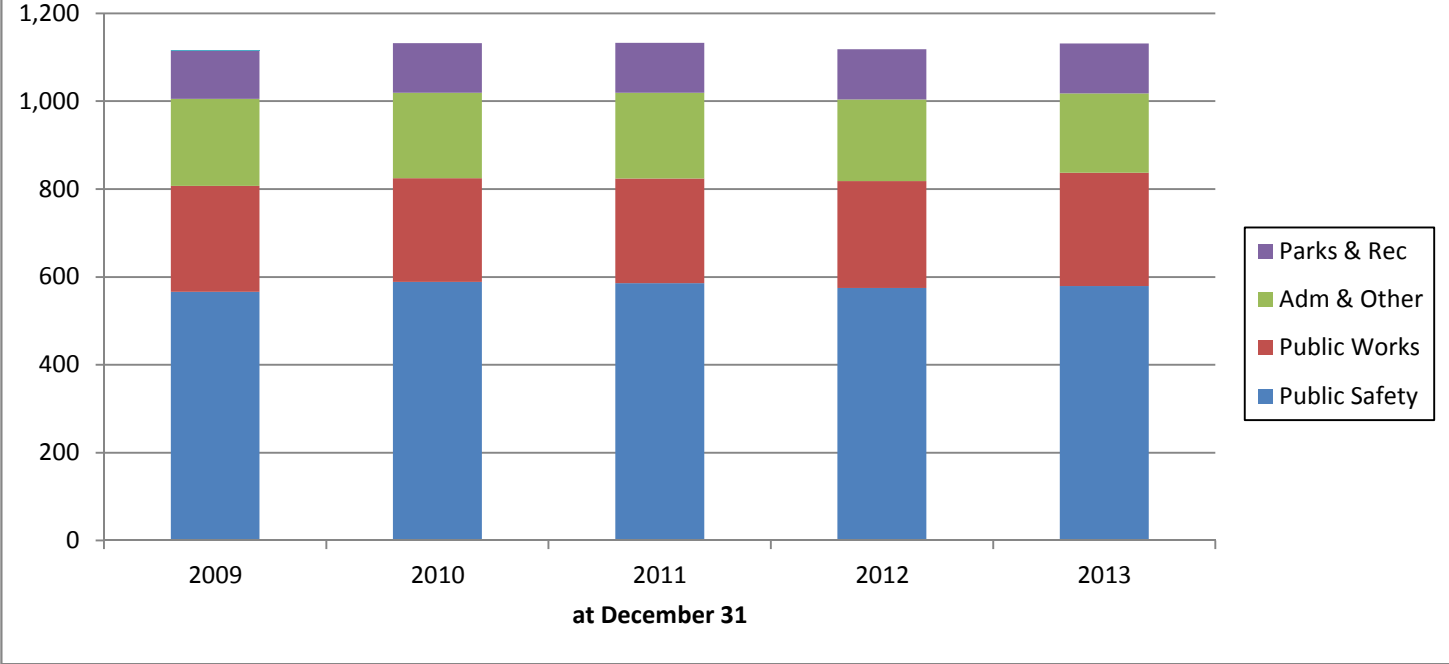
City of South Bend
Expenditure Crosswalk - 2013 Actual
Updated - February 2014

<i>Fund</i>	<i>Fund Name</i>	<i>Total Actual</i>	<i>General Government</i>	<i>Public Safety</i>	<i>Economic Development</i>	<i>Culture & Recreation</i>	<i>Engineering/ Streets</i>	<i>Water & Sewer</i>	<i>Code & Sanitation</i>	<i>Internal Service</i>	<i>Building Department</i>
	<i>Total Debt Service Funds</i>	335,990	0	0	335,990	0	0	0	0	0	0
	<i>Total Redevelopment Commission Funds</i>	25,664,744	0	0	23,919,627	1,745,117	0	0	0	0	0
	<i>City Operations Total</i>	279,658,041	12,781,296	83,194,698	34,390,819	22,184,616	17,120,436	75,096,691	9,454,466	24,428,682	1,006,337
	<i>Less: Internal Service Funds</i>	(24,428,682)	0	0	0	0	0	0	0	(24,428,682)	0
	<i>Net Expenditures</i>	255,229,359	12,781,296	83,194,698	34,390,819	22,184,616	17,120,436	75,096,691	9,454,466	0	1,006,337
	<i>Percent</i>	100.00%	5.01%	32.60%	13.47%	8.69%	6.71%	29.42%	3.70%	0.00%	0.39%

City of South Bend
General Fund Expenditure Summary - 2008 to 2013
Updated - February 2014

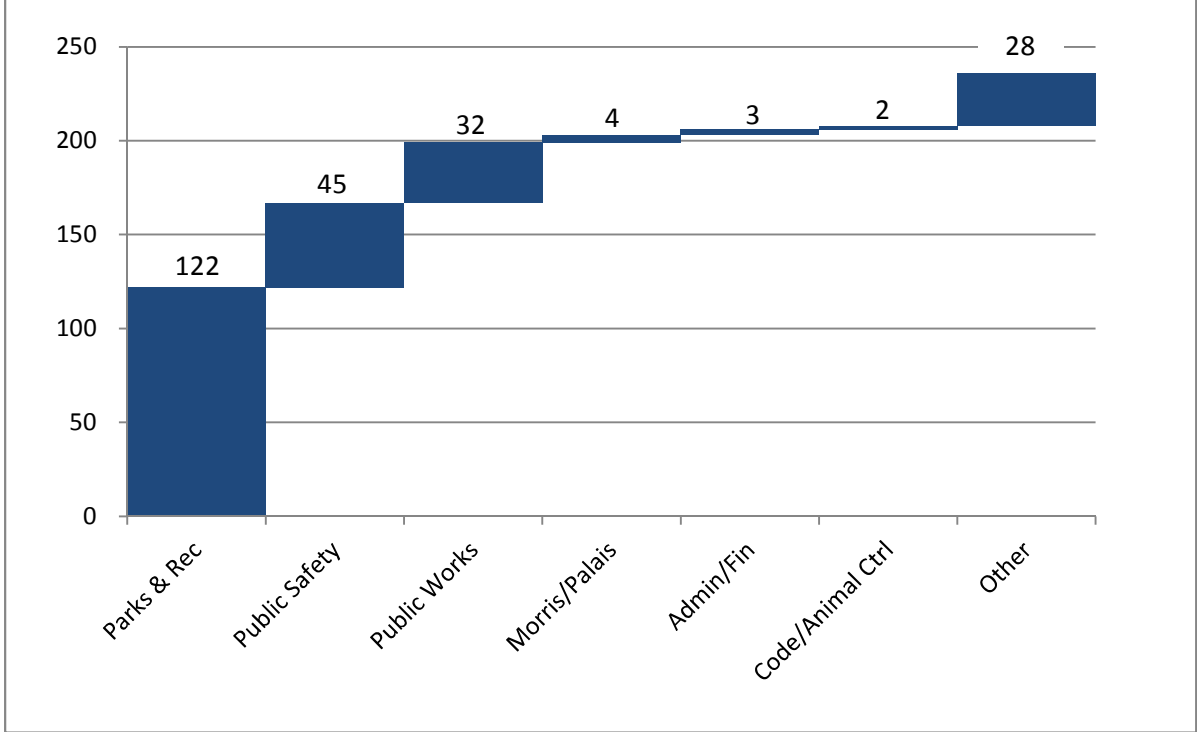
Fund	Fund Name	2008 Actual	2009 Actual	2010 Actual	2011 Actual	2012 Actual	2013 Actual
	General Fund Departments						
	Mayor	882,649	714,136	625,698	636,428	619,133	631,570
	Board of Safety	14,639	450	0	0	0	0
	311 Call Center	0	0	0	0	0	268,752
	City Clerk	307,901	314,652	279,314	311,388	304,355	323,764
	Common Council	597,272	316,114	294,613	296,742	379,017	348,921
	Administration & Finance	1,621,827	1,242,295	1,253,734	1,420,841	1,560,874	1,803,645
	Morris Performing Arts Center	839,309	884,145	820,438	878,897	913,867	925,137
	Palais Royale Ballroom	483,361	403,142	328,956	305,476	327,142	396,959
	Youth Services Bureau	75,000	0	0	0	0	0
	Art Association	65,000	0	0	0	0	0
	Studebaker Museum	185,527	68,721	0	0	0	0
	Main Street Parking Garage Capital	55,000	0	0	0	0	0
	Leighton Plaza Capital	42,840	7,550	0	0	0	0
	Legal Department	902,796	766,549	724,752	871,701	772,965	895,789
	Energy Office	0	11,109	84,977	424,219	472,239	54,256
	Engineering	4,991,599	3,719,122	3,196,247	1,547,192	1,684,238	1,300,089
	Building Maintenance	451,736	377,409	177,034	188,315	0	0
	Traffic & Lighting	2,699,922	2,154,695	1,569,561	1,692,060	683,161	109,536
	Police Department	25,995,629	24,992,890	24,956,529	23,693,019	24,605,342	22,509,527
	Communications Center	1,518,609	1,474,704	1,772,300	1,890,970	1,957,028	2,060,643
	Police Department - Public Safety LOIT funded	0	0	0	2,769,344	3,112,460	3,986,751
	Fire Department	21,474,853	20,708,119	20,879,472	19,847,153	20,861,407	20,204,550
	Fire Department - Public Safety LOIT funded	0	0	0	2,207,624	2,364,074	3,553,638
	Community & Economic Development	887,564	867,911	0	0	0	0
	Human Rights	299,164	279,671	252,273	254,956	275,176	314,055
	Wayne Street Parking Garage Capital	0	16,450	0	0	0	0
	Code Enforcement	1,315,028	1,249,904	1,392,316	1,470,347	1,799,389	1,990,564
	Weights & Measures	40,693	41,668	0	0	0	0
	Code Hearing Officer	44,352	15,844	46,218	44,848	46,231	38,977
	Abandoned Vehicle	62,947	59,774	54,099	121,137	61,734	32,404
	Unsafe Building	170,414	154,948	49,168	64,621	68,704	26,052
	Animal Control	477,915	485,896	483,486	501,584	530,748	550,747

Full-Time Employees: 2009 - 2013



	2009	2010	2011	2012	2013
Public Safety	566	589	586	575	579
Public Works	241	236	238	243	258
Adm & Other	198	194	195	186	181
Parks & Rec	111	113	114	114	113
Total	1116	1132	1133	1118	1131

Part Time & Temporay Employees - December 31, 2013



Activity	Total	Percent
Parks & Recreation	122	59.56%
Public Safety	45	17.49%
Public Works	32	15.85%
Morris/Palais	4	2.73%
Administration/Finance	3	1.64%
Code Enforcement	2	1.09%
Other	28	1.64%
Total	236	100.00%

Other - City Attorney's Office and Department of Community Investment

**Standard & Poor's General Obligation/General Obligation Equivilant Ratings
of Indiana Local Governments as of January 3, 2014**

	Obligor	Rating	Outlook
1	State of Indiana	AAA	STABLE
2	Boone Cnty	AA+	STABLE
3	Brownsburg Town (Hendricks County)	AA+	STABLE
4	Carmel	AA+	STABLE
5	Carmel Clay Pub Lib	AA+	STABLE
6	East Noble School Corporation	AA+	STABLE
7	Hamilton Cnty	AA+	STABLE
8	Hancock County	AA+	STABLE
9	Marion County Health & Hospital Corporation	AA+	STABLE
10	Westfield	AA+	STABLE
11	South Bend	AA	STABLE
12	Clay Twp	AA	STABLE
13	Fishers	AA	STABLE
14	Hamilton East Public Library	AA	STABLE
15	Hancock County Public Library	AA	STABLE
16	Indianapolis	AA	STABLE
17	Indianapolis Brd of Sch Comr	AA	STABLE
18	Jasper	AA	STABLE
19	Noblesville	AA	STABLE
20	Noblesville Redev Comm	AA	STABLE
21	Carmel Clay Sch Corp	AA	STABLE
22	West Lafayette	AA	STABLE
23	Winfield Town	AA	STABLE
24	Bloomington	AA-	STABLE
25	Brown Cnty Sch Corp.	AA-	STABLE
26	Brownsburg Comnty Sch Corp	AA-	STABLE
27	Cass Cnty	AA-	STABLE
28	Clark County	AA-	STABLE
29	Clarksville	AA-	STABLE
30	Clarksville Comnty Sch Corp	AA-	STABLE
31	Columbus	AA-	STABLE
32	Crown Point Comnty Sch Corp	AA-	STABLE
33	Cumberland	AA-	STABLE
34	Daviess Cnty	AA-	STABLE

**Standard & Poor's General Obligation/General Obligation Equivilant Ratings
of Indiana Local Governments as of January 3, 2014**

	Obligor	Rating	Outlook
35	De Kalb Cnty Redev Comm	AA-	STABLE
36	DeKalb Cnty	AA-	STABLE
37	Elkhart Cnty	AA-	STABLE
38	Evansville Pk Dist	AA-	STABLE
39	Fort Wayne	AA-	STABLE
40	Fort Wayne Pk Dist	AA-	STABLE
41	Franklin Twp Comnty Sch Corp	AA-	STABLE
42	Hamilton Hgts Sch Corp	AA-	STABLE
43	Hamilton Southeastern Schs	AA-	STABLE
44	Hendricks Cnty	AA-	STABLE
45	Hussey-Mayfield Mem Pub Lib	AA-	STABLE
46	Jasper Cnty	AA-	STABLE
47	Johnson Cnty	AA-	STABLE
48	Knox Cnty	AA-	STABLE
49	Kosciusko Cnty	AA-	STABLE
50	Lake Cnty Pub Lib	AA-	STABLE
51	Lawrence Township	AA-	STABLE
52	Marshall Cnty Holding Corp	AA-	STABLE
53	Merrillville	AA-	STABLE
54	Monroe Cnty	AA-	STABLE
55	Mooreville Pub Lib	AA-	STABLE
56	North West Hendricks Sch Corp	AA-	STABLE
57	Northwest Allen County Schools	AA-	STABLE
58	Owen Cnty Pub Lib	AA-	STABLE
59	Penn-Harris-Madison Sch Corp	AA-	STABLE
60	Pike Twp Metro Sch Dist	AA-	STABLE
61	Plainfield Twn	AA-	STABLE
62	Porter Cnty	AA-	STABLE
63	Schererville Twn Wtrwks Dist	AA-	STABLE
64	Shelby Eastern Schs	AA-	STABLE
65	South Bend Comnty Sch Corp	AA-	STABLE
66	Southern Hancock Cnty Comnty Sch Corp	AA-	STABLE
67	Southwest Allen County Schools	AA-	STABLE
68	Town of Cedar Lake (Lake County)	AA-	STABLE
69	Town of St. John	AA-	STABLE

**Standard & Poor's General Obligation/General Obligation Equivalent Ratings
of Indiana Local Governments as of January 3, 2014**

	Obligor	Rating	Outlook
70	Tri-Creek Sch Corp	AA-	STABLE
71	Union Twp Sch Corp (Porter Cnty)	AA-	STABLE
72	Valparaiso	AA-	STABLE
73	Vanderburgh Cnty	AA-	NEGATIVE
74	Vigo County	AA-	STABLE
75	Warrick Cnty Redev Dist	AA-	STABLE
76	Warsaw	AA-	STABLE
77	Washington Twp	AA-	STABLE
78	Yorktown Comnty Schs	AA-	STABLE
79	Zionsville	AA-	STABLE
80	Zionsville Comnty Sch Corp	AA-	STABLE
81	Avon Comnty Sch Corp	A+	STABLE
82	Bartholomew Cons Sch Corp	A+	STABLE
83	Beech Grove City Schs	A+	STABLE
84	Bluffton-Harrison Metro Sch Dist	A+	STABLE
85	Brown Cnty Pub Lib	A+	STABLE
86	Brownsburg Pub Lib Dist	A+	NEGATIVE
87	Center Grove Comnty Sch Corp	A+	STABLE
88	Clark-Pleasant Comnty Sch Corp	A+	STABLE
89	Clay Comnty Schs	A+	STABLE
90	Clay County	A+	STABLE
91	Cloverdale Comnty Sch Corp	A+	STABLE
92	Crawford Cnty Comnty Sch Corp	A+	STABLE
93	Crawfordsville Comnty Sch Corp	A+	STABLE
94	Crawfordsville Dist Pub Lib	A+	STABLE
95	Crown Point Community Public Library	A+	STABLE
96	Adams Center Community Schools	A+	STABLE
97	Danville Comnty Sch Corp	A+	STABLE
98	Decatur Cnty	A+	STABLE
99	DeKalb Cnty Eastern Comnty Sch Dist	A+	STABLE
100	Delaware Comnty Sch Corp	A+	STABLE
101	Duneland Sch Corp	A+	STABLE
102	Dyer	A+	STABLE
103	East Allen Cnty Schs	A+	STABLE
104	Eastbrook Comnty Sch Corp	A+	STABLE

**Standard & Poor's General Obligation/General Obligation Equivilant Ratings
of Indiana Local Governments as of January 3, 2014**

	Obligor	Rating	Outlook
105	Eastern Hancock Cnty Comnty Sch Corp	A+	STABLE
106	Eastern Howard School Corporation	A+	STABLE
107	Elkhart	A+	STABLE
108	Evansville-Vanderburgh Pub Lib	A+	STABLE
109	Fairfield Comnty Schs	A+	STABLE
110	Fort Wayne Comnty Schs	A+	STABLE
111	Franklin	A+	STABLE
112	Franklin Cnty Comnty Sch Corp	A+	STABLE
113	Franklin Comnty Sch Corp	A+	STABLE
114	Fulton Cnty	A+	STABLE
115	Goshen Comnty Schs	A+	STABLE
116	Greene Cnty	A+	STABLE
117	Greenfield Cent Comnty Sch Corp	A+	STABLE
118	Greensburg	A+	STABLE
119	Greensburg Comnty Schs	A+	STABLE
120	Greenwood Comnty Sch Corp	A+	STABLE
121	Griffith	A+	STABLE
122	Hanover Comnty Sch Corp	A+	STABLE
123	Highland	A+	STABLE
124	Highland San Dist	A+	STABLE
125	Highland Sch Twn	A+	STABLE
126	Hobart	A+	STABLE
127	Jackson County	A+	STABLE
128	Jasper Cnty Pub Lib	A+	STABLE
129	Jay Cnty	A+	STABLE
130	Jeffersonville	A+	STABLE
131	Kankakee Vy Sch Corp	A+	STABLE
132	Kendallville Pub Lib	A+	STABLE
133	Kokomo Ctr Twp Cons Sch Corp	A+	STABLE
134	La Porte	A+	STABLE
135	Lafayette	A+	STABLE
136	LaGrange Cnty Pub Lib	A+	NEGATIVE
137	Lakeland Sch Corp	A+	STABLE
138	Lebanon	A+	STABLE
139	Lebanon Comnty Sch Corp	A+	STABLE

**Standard & Poor's General Obligation/General Obligation Equivalent Ratings
of Indiana Local Governments as of January 3, 2014**

	Obligor	Rating	Outlook
140	Maconaquah Sch Corp	A+	STABLE
141	Madison Cons Schs	A+	STABLE
142	Madison-Grant United Sch Corp	A+	STABLE
143	Marion Comnty Schs	A+	STABLE
144	Merrillville Comnty Sch Corp	A+	STABLE
145	Michigan City	A+	STABLE
146	Middlebury Comnty Schs	A+	STABLE
147	Mishawaka	A+	STABLE
148	Monroe Cnty Comnty Sch Corp	A+	STABLE
149	Mooreville Cons Sch Corp	A+	STABLE
150	New Albany	A+	STABLE
151	New Albany-Floyd Cnty Cons Sch Corp	A+	STABLE
152	New Carlisle-Olive Twp Pub Lib	A+	STABLE
153	New Castle-Henry Cnty Pub Lib	A+	STABLE
154	New Haven	A+	STABLE
155	Nineveh-Hensley-Jackson United Sch Corp	A+	STABLE
156	Noble Cnty Pub Lib	A+	STABLE
157	Noblesville Schools	A+	STABLE
158	North Gibson Sch Corp	A+	STABLE
159	North Harrison Comnty Sch Corp	A+	NEGATIVE
160	North Knox Sch Corp	A+	STABLE
161	North Montgomery Comnty Sch Corp	A+	STABLE
162	North Newton Sch Corp	A+	STABLE
163	North Posey Cnty Metro Sch Dist	A+	STABLE
164	North Posey Multi Sch Bldg Corp	A+	STABLE
165	North Putnam Comnty Sch Corp	A+	STABLE
166	North Spencer Cnty Sch Corp	A+	STABLE
167	Northern Wells Community Schools	A+	STABLE
168	Northwestern Cons Sch Dist	A+	STABLE
169	Orleans Comnty Schs	A+	STABLE
170	Pendleton-Fall Creek Board of Parks and Recreation	A+	STABLE
171	Perry Twp Metro Sch Dist	A+	STABLE
172	Plainfield-Guilford Twp Pub Lib	A+	STABLE
173	Portage	A+	STABLE
174	Porter Cnty Pub Lib Sys	A+	STABLE

**Standard & Poor's General Obligation/General Obligation Equivilant Ratings
of Indiana Local Governments as of January 3, 2014**

	Obligor	Rating	Outlook
175	Portland	A+	STABLE
176	Pulaski Cnty	A+	STABLE
177	Putnam Cnty	A+	STABLE
178	Randolph Cnty	A+	STABLE
179	Rensselaer Cent Sch Corp	A+	STABLE
180	Saint Joseph County	A+	STABLE
181	Schererville Town	A+	STABLE
182	Seymour	A+	STABLE
183	Shelbyville Cent Schs	A+	STABLE
184	Smith-Green Comnty Schs	A+	STABLE
185	Southeast Dubois Cnty Sch Corp.	A+	STABLE
186	Southeast Fountain Sch Corp	A+	STABLE
187	Southwest Dubois Cnty Sch Corp	A+	STABLE
188	Southwest Parke Comnty Sch Corp	A+	STABLE
189	Speedway	A+	STABLE
190	St Joseph Cnty Arpt Auth	A+	STABLE
191	St Joseph Cnty Pub Lib	A+	STABLE
192	Starke County	A+	STABLE
193	Tell City-Troy Twp Sch Corp.	A+	STABLE
194	Tippecanoe Cnty Pub Lib	A+	STABLE
195	Tippecanoe Sch Corp	A+	STABLE
196	Tippecanoe Valley School Corporation	A+	STABLE
197	Tri-Cnty Sch Corp	A+	STABLE
198	Union Cnty-Coll Corner Jt Sch Dist	A+	STABLE
199	Union Sch Corp	A+	STABLE
200	Valparaiso Comnty Sch Corp	A+	NEGATIVE
201	Vincennes	A+	STABLE
202	Vincennes Comnty Sch Corp	A+	STABLE
203	Warren Twp Metro Sch Dist	A+	STABLE
204	Washington Twp Metro Sch Dist	A+	STABLE
205	Wawasee Comnty Sch Corp	A+	STABLE
206	Wayne Twp Metro Sch Dist	A+	STABLE
207	Western Boone Cnty Comnty Sch Corp	A+	STABLE
208	Western Sch Corp	A+	STABLE
209	Whitley Cnty	A+	STABLE

**Standard & Poor's General Obligation/General Obligation Equivilant Ratings
of Indiana Local Governments as of January 3, 2014**

	Obligor	Rating	Outlook
210	Whitley Cnty Cons Schs	A+	STABLE
211	Winchester	A+	STABLE
212	Yorktown	A+	STABLE
213	Batesville Comnty Sch Corp	A	STABLE
214	Bedford	A	STABLE
215	Beech Grove Pub Lib	A	STABLE
216	Brown Cnty	A	STABLE
217	Carnegie Pub Lib of Steuben Cnty	A	STABLE
218	Center Twp	A	STABLE
219	Centerville & Ctr Twp Pub Lib Bldg Corp	A	STABLE
220	Clinton Cent Sch Corp	A	STABLE
221	Clinton Prairie Sch Corp	A	STABLE
222	Culver Comnty Schs Corp	A	STABLE
223	DeKalb Cnty Cent United Sch Dist	A	STABLE
224	Elkhart Comnty Schs	A	STABLE
225	Elwood	A	STABLE
226	Evansville-Vanderburgh Sch Corp	A	STABLE
227	Fayette Cnty	A	NEGATIVE
228	Fayette Cnty Sch Corp	A	STABLE
229	Garrett-Keyser-Butler Comnty Sch Dist	A	STABLE
230	Goshen	A	STABLE
231	Hammond	A	STABLE
232	Hammond San Dist	A	STABLE
233	Henry Cnty	A	STABLE
234	Huntington Cnty Comnty Sch Corp	A	STABLE
235	Jefferson Cnty	A	STABLE
236	Jennings Cnty	A	STABLE
237	Lafayette Sch Corp	A	STABLE
238	Lake Cnty Pk Dist	A	STABLE
239	Manchester Comnty Sch	A	STABLE

**Standard & Poor's General Obligation/General Obligation Equivilant Ratings
of Indiana Local Governments as of January 3, 2014**

	Obligor	Rating	Outlook
240	Merrillville Conservancy Dist	A	STABLE
241	Muncie Pub Lib	A	STABLE
242	Munster Twn	A	STABLE
243	New Durham Twp Metro Sch Dist Sch Corp	A	STABLE
244	North Lawrence Comnty Schs	A	STABLE
245	North Vermillion Comnty Sch Corp	A	STABLE
246	Northeast Dubois Cnty Sch Corp.	A	STABLE
247	Orange Cnty	A	STABLE
248	Pendleton Comnty Lib Bldg Corp	A	STABLE
249	Perry County	A	STABLE
250	Peru Comnty Sch Corp	A	STABLE
251	Porter Twp Sch Corp	A	STABLE
252	Richmond	A	STABLE
253	Salem Comnty Sch Corp	A	STABLE
254	Seymour Comnty Sch Corp	A	STABLE
255	South Dearborn Comnty Sch Corp	A	STABLE
256	South Henry Sch Corp	A	STABLE
257	South Putnam Comnty Sch Corp	A	STABLE
258	Southwestern Cons Sch Dist of Shelby Cnty	A	STABLE
259	Spencer-Owen Comnty Schs	A	STABLE
260	Starke County Public Library	A	STABLE
261	Steuben Cnty Metro Sch Dist	A	STABLE
262	Twin Lakes Sch Corp	A	STABLE
263	Wabash City Schs	A	STABLE
264	Wabash County Metropolitan School District	A	STABLE
265	West Lafayette Pub Lib Dist	A	STABLE
266	Western Wayne Schs	A	STABLE
267	Westfield-Washington Pub Lib	A	STABLE
268	Whiting San Dist	A	STABLE

**Standard & Poor's General Obligation/General Obligation Equivalent Ratings
of Indiana Local Governments as of January 3, 2014**

	Obligor	Rating	Outlook
269	Whitko Comnty Sch Corp	A	STABLE
270	Anderson	A-	STABLE
271	Anderson San Dist	A-	STABLE
272	Blue River Vy Sch Corp	A-	STABLE
273	Buck Creek Twp	A-	POSITIVE
274	Greater Clark Cnty Sch Corp	A-	STABLE
275	Greencastle Comnty Sch Corp	A-	STABLE
276	Greenwood Pub Lib	A-	STABLE
277	Hammond City Sch	A-	STABLE
278	Lake Central Sch Corp	A-	POSITIVE
279	Lake Station Comnty Sch Corp	A-	STABLE
280	Lawrence	A-	NEGATIVE
281	Lawrence Twp Metro Sch Dist	A-	STABLE
282	Marion	A-	STABLE
283	Northwestern Sch Corp	A-	STABLE
284	Princeton	A-	STABLE
285	Randolph Cent Sch Corp.	A-	STABLE
286	South Montgomery Comnty Sch Corp	A-	STABLE
287	Southwest Sch Corp	A-	STABLE
288	Valparaiso Pk & Recre Dist	A-	STABLE
289	Warsaw Comnty Pub Lib	A-	STABLE
290	Washington County	A-	NEGATIVE
291	Westfield Washington Schools	A-	NEGATIVE
292	Damon Run Conservancy Dist	BBB+	STABLE
293	Richland- Bean Blossom Comnty Sch Corp	BBB+	NEGATIVE
294	Terre Haute San Dist	BBB+	STABLE
295	Washington Comnty Sch Inc	BBB+	STABLE
296	Mount Vernon Comnty Sch Corp	BBB	STABLE
297	Munster Schs	BBB	STABLE

**Standard & Poor's General Obligation/General Obligation Equivalent Ratings
of Indiana Local Governments as of January 3, 2014**

	Obligor	Rating	Outlook	
298	Pike Cnty Sch Corp	BBB-	NEGATIVE	
299	East Chicago	BB	STABLE	